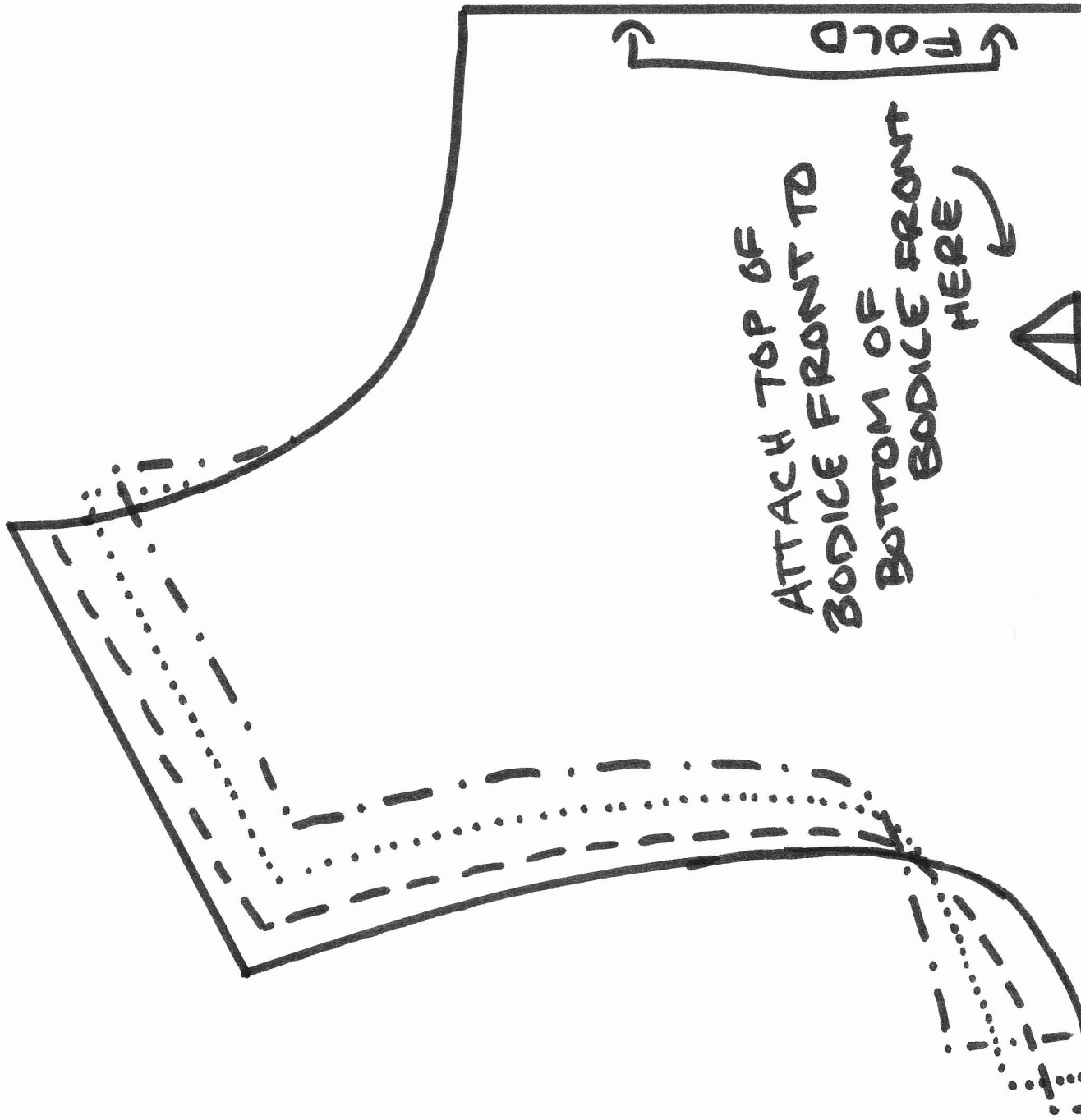
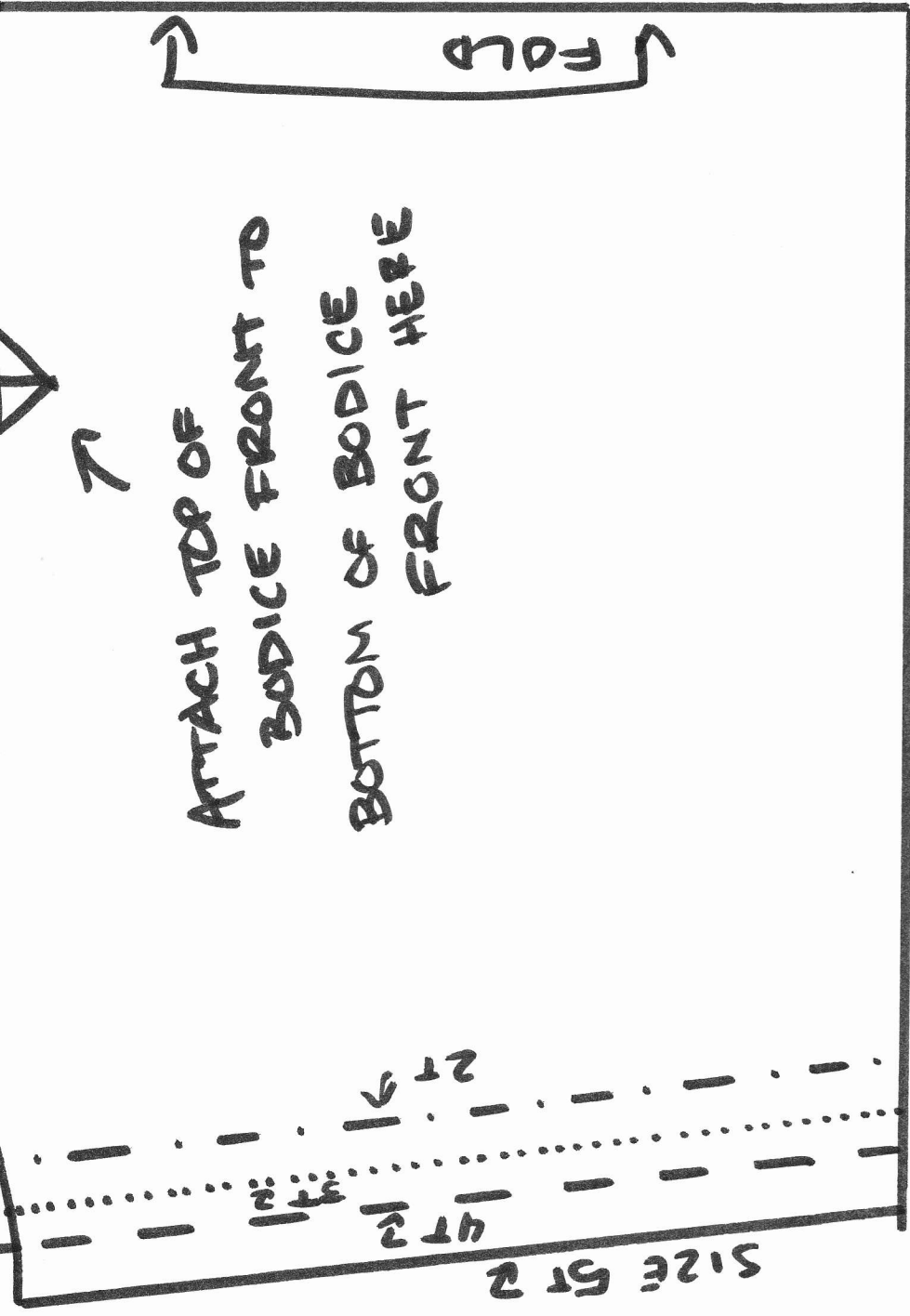


ME SEWCRAZY

OH JACKIE
BODICE FRONT





CUT () OF EXTERIOR ON FOLD
 CUT () OF LINING ON FOLD

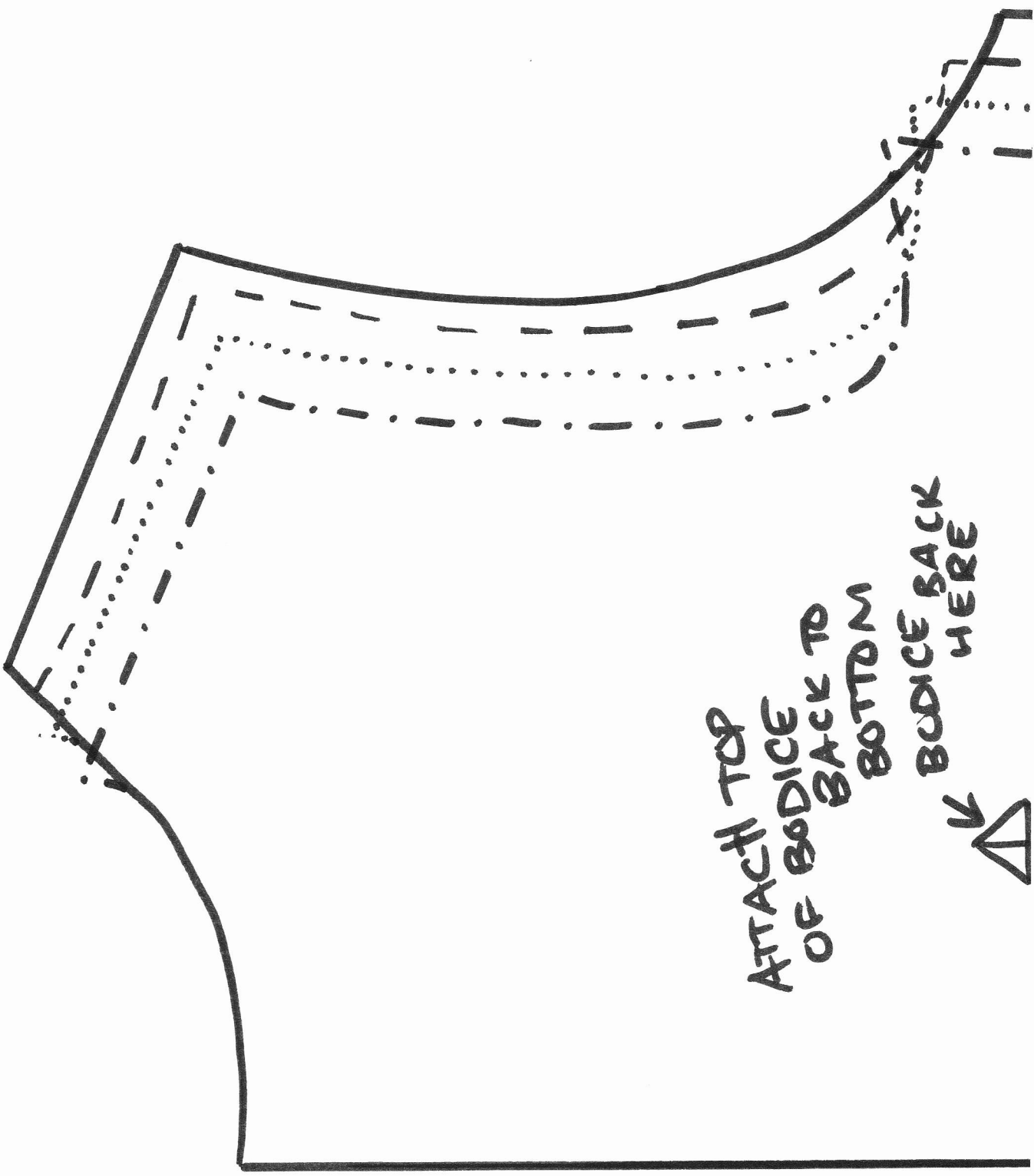
OH JACKIE
BODICE FRONT

ME SEW CRAZY

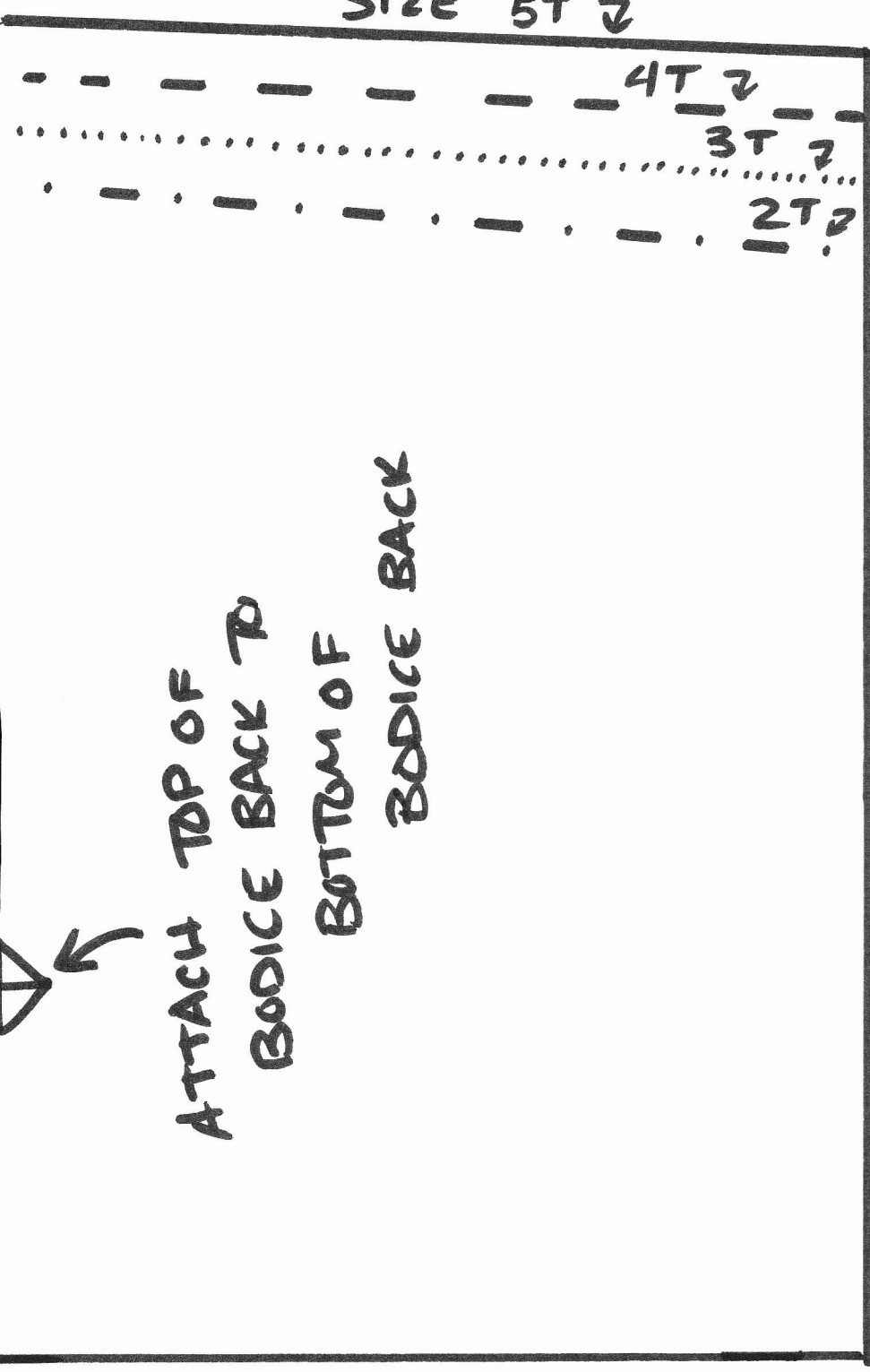
ME SEW CRAZY

OH JACKIE

BODICE BACK



ATTACH TOP
OF BODICE
BACK TO
BOTTOM
BODICE BACK
HERE



ATTACH TOP OF
BODICE BACK TO
BOTTOM OF
BODICE BACK

SIZE 5T 2

4T 2
3T 2
2T 2

OH JACKIE
BODICE BACK

- CUT (2) OF EXTERIOR
- CUT (2) OF LINING

ME SEWCRAZY