

Crafting With The Craftwell eCraft and eBosses

SCRAPBOOKING, PAPER CRAFTS, AND SO MUCH MORE



DIY
STEP-BY-STEP
INSTRUCTIONS
ON ALL
PROJECTS

PROJECTS FOR ALL
CRAFTERS:
PAPER, FABRIC,
HOME DECOR
AND MORE

NEW TECHNIQUES,
NEW PRODUCTS,
NEW FUN
FOR THE AVID
CRAFTER

Make
It... *Bling*

Artistic
Go ahead. Be an Artist.

Love Bling? It's easy to create your own custom crystal designs and rhinestone templates with Artistic Software!

Use Artistic Suite V6
or Artistic Crystals
software to create a
custom design.



Send to digital
cutter to cut out
template.



Place crystals
in design, then
press in place!



Artistic Crystals and Artistic Suite V6.0 software, eCraft Cutting System, and Artistic Press are all available at your local Artistic Dealer. Find one, as well as more project ideas at

www.ArtisticCreativeProducts.com

from the editor

D

Dear Crafters,

The Craftwell product family has a new addition this year, the eBoss Automatic Embosser & Die Cutter. Now you can emboss and cut up to A4 and letter size materials with just the push of a button! Our new line of full size embossing folders make card making easier than ever. Compatible with most brands of embossing folders and dies, it goes beyond paper crafting as the eBoss cuts fabric, vinyl, wood, plastic, and metal too!

The award-winning eCraft Electronic Cutting System continues to grow in popularity. Ideal for the home, school or workplace, it offers mat-less cutting, an innovation that increases the creative possibilities for paper crafting, fashion and home decor.

In this publication, you will discover a world of creative inspiration. It is with great pleasure that we share with you the stunning projects created by the users of the eBoss Automatic Embosser & Die Cutter and the eCraft Electronic Cutting System.

Sincerely,

Craftwell Inc
 craftwell

About Craftwell

Headquartered in New York City, Craftwell is a leader in providing innovative electronic products and Internet solutions to the crafting and education markets. Our newest product, the eBoss Automatic Embosser & Die Cutter, handles up to A4 and letter sized material. We also offer the eCraft Electronic Cutting System, a CES (Consumer Electronic Show) Innovations award winner. The eCraft's advanced technology simplifies die cutting, saving consumers time and money.

For more information visit www.craftwellusa.com

PROJECTS

NATURAL CELEBRATION CARD	PG 5-6
BABY BOY DIAPER CAKE	PG 7
ANCHORED HEART ONESIE	PG 8
LAZY PUPPY LAYOUT	PG 9
LOVE YOU CARD	PG 10
CLASSY CHIC ORNAMENTS	PG 11
BUTTONS & BORDERS	PG 12-14
BRIDESMAID'S CLUTCH	PG 15-16
ADORABLE DOG LEASH HOLDER	PG 17
WISHING WELL CARD	PG 18
BRIGHT FUTURE LAYOUT	PG 19
SEASON'S CELEBRATION CARD	PG 20

craftwell[®] PROVIDES A WORLD OF POSSIBILITIES



eBosser[™]

The eBosser is the first automatic embossing and cutting system for Letter Size & A4. Streamlined and attractive, the eBosser doesn't get by on looks alone. It is also compatible with most brands of cutting dies and embossing folders!

Large format embossing has been taken to a new level with the eBosser. Accepting A4 & Letter Size materials, this is a one-step process to cardmaking and more. Cut up to eight layers of fabric or 3mm of leather with ease. It gets better: there is no need to hold down a button to feed in materials. Simply load the desired embossing folder or die, and let the eBosser do the rest.

Designed with safety in mind, the eBosser is a must for any crafty home or school!


eCraft[™]



The eCraft is the first electronic cutting system that cuts without a mat! Using state of the art technology, the eCraft brings digital cutting to a new level. Winner of the prestigious Consumer Electronics Show Innovations Award, the eCraft was developed for crafters, eliminating frustrations people previously experienced with other cutters.

The eCraft offers flexibility, providing three ways to feed materials into the machine. Front mode allows for customizable control of the cutting area, making you the boss! Tray mode allows you to stack multiple sheets of cardstock for cutting, feeding the material similar to a printer (saving time by multi-tasking!). Roll mode provides the perfect system for making banners by any length. Yes, 12" by any length! (No cutting mat means no restrictions.)

The eCraft not only cuts, but it draws as well. A pen and a blade are housed together, preventing alignment issues. Never remove a pen for a blade or vice versa again! There is even a clear cut indicator light near the blade, illuminating when the material is being cut successfully.

Options are important. The eCraft uses SD Image Cards, preloaded with hundreds of images, for operation without a computer. For the designer savvy, eCraftshop software comes with the eCraft, enabling the creation of unique images via a computer. Our online digital image store, eCraftcentral.com, offers thousands of individual images for purchase.

To learn more about these products, visit www.craftwellusa.com.



NATURAL CELEBRATION CARD



DESIGNED BY: DENISE O'CONNOR

SUPPLY LIST

EBOSSER AUTOMATIC EBOSSER & DIE CUTTER

CARDSTOCK FOR A2 BASE

CARD FRONT CARDSTOCK CUT TO 3.75" x 5"

RIBBONS IN 3 GRADIENT COLORS

CARDSTOCK AND/OR PATTERNED PAPER FOR FLOWER/LEAVES

BUTTON FOR FLOWER CENTER

TWINE FOR BUTTON (OPTIONAL)

ARCHIVAL INK IN BLACK FOR SENTIMENT

PAPERTREY INK SENTIMENT GREETINGS II STAMP

PAPERTREY INK TURNING A NEW LEAF CUTTING DIE

PAPERTREY INK BEAUTIFUL BLOOMS XX CUTTING DIE

SCOTCH TAPE

FOAM ADHESIVE

INSTRUCTIONS

STEP ONE

LINE UP YOUR DIE ONTO YOUR PRE-CUT CARD FRONT.

STEP TWO

USE A LITTLE TAPE TO KEEP IT IN PLACE IF NEEDED AND THEN RUN THROUGH THE EBOSSER.

STEP THREE

SET ASIDE THE POSITIVE IMAGE FOR ANOTHER PROJECT.

NATURAL CELEBRATION CARD

STEP FOUR

USING YOUR NEGATIVE IMAGE, ADHERE RIBBON TO THE BACK OF THE CARD FRONT, COVERING THE OPENING CREATED BY THE DIE.

STEP FIVE

AFTER COVERING A THIRD OF THE IMAGE, CHANGE TO THE NEXT COLOR AND CONTINUE CHANGING AGAIN ONCE FILLING UP ANOTHER THIRD.

STEP SIX

ONCE THE CUT OUT IS COVERED, FLIP IT OVER AND CHECK TO MAKE SURE THAT YOU DON'T SEE ANY SPACE THAT ISN'T FILLED WITH THE RIBBON.

STEP SEVEN

STAMP YOUR SENTIMENT ON THE CARD FRONT AND SET ASIDE.

STEP EIGHT

USING YOUR FLOWER DIES, CUT OUT THE LAYERS OF THE FLOWER WITH YOUR EBOSSER AND ASSEMBLE.

STEP NINE

ADD YOUR BUTTON ON TOP.

STEP TEN

USING FOAM ADHESIVE, ADHERE YOUR FLOWER TO THE CARD FRONT.

STEP ELEVEN

ATTACH CARD FRONT TO THE CARD BASE.





BABY BOY DIAPER CAKE

DESIGNED BY CASSIE BOX

STEP ONE

START BY ROLLING THE DIAPERS AND SECURING THEM WITH A RUBBER BAND. TAKE THE BUNCH AND USE A LARGE RUBBER BAND TO HOLD THEM INTO A ROUND SHAPE. REPEAT THIS FOR THREE TIERS USING FEWER DIAPERS ON EACH TIER.

STEP TWO

CUT 4" STRIPS OF WHITE CARDSTOCK AND WRAP IT AROUND EACH TIER.

STEP THREE

CUT A 3" STRIP OF PATTERN PAPER AND ADHERE IT TO THE CARDSTOCK. THE 'LITTLE BOY' LINE FROM ECHO PARK WAS USED IN THE PICTURE.

STEP FOUR

CUT 4" X 4" SQUARES FROM CARDSTOCK PAPER AND SEND IT THROUGH THE EBOSSER USING THE QUICKUTZ 4"X 4" PINWHEEL DIE.

STEP FIVE

TIE TWINE THROUGH THE MIDDLE OF THE BUTTON, POSITIONING ON THE PINWHEELS TO DECORATE. USE HOT GLUE TO ADHERE THE PINWHEELS TO THE CAKE.

STEP SIX

THE PLANE AND TRAINS ARE FROM THE ECHO PARK 'LITTLE BOY' ELEMENT STICKER SHEET. ATTACH THEM WITH POP DOTS TO GIVE DIMENSION. TWINE FROM THE TWINERY IS USED FOR THE SMOKE ON THE PLANE AND THE TRAIN.

STEP SEVEN

USE THE EBOSSER AND THE SIZZIX 'BIG SHOT' DIE TO CUT STARS. ADD THESE TO THE BOTTOM TIER OF THE CAKE.

STEP EIGHT

CUT MORE PINWHEELS AND PREPARE TWO SIZES OF PUNCH OUT CLOUDS. ATTACH THEM TO STICKS FOR THE CAKE TOPPER.

STEP NINE

USE THE EBOSSER AND YOUR FAVORITE CUTTING DIES OR EMBOSsing FOLDERS TO CONTINUE EMBELLISHING THE CAKE AS DESIRED.

SUPPLIES

EBOSSER AUTOMATIC EMOSSER & DIE CUTTER

30-40 DIAPERS
(SMALLER DIAPERS MAKE A SMALLER CAKE. CAKE DISPLAYED IN PICTURE REQUIRES SIZE 3.)

RUBBER BANDS (SMALL & LARGE)

4" CARDSTOCK

'LITTLE BOY' STICKERS FROM ECHO PARK

QUICKUTZ 4" X 4" PINWHEEL DIE

HOT GLUE

POP DOTS

TWINE

SIZZIX 'BIG SHOT' DIE

STICKS

CLOUD PUNCHER

ANCHORED HEART ONESIE

SUPPLIES

ECRAFT ELECTRONIC
CUTTING SYSTEM

WATERLIFE SD IMAGE CARD

COOLER CONCEPTS INKJET
OPAQUE TRANSFER PAPER

COLOR PRINTER

DESIGN SOFTWARE OF
CHOICE (EXAMPLE: PHOTOSHOP)

PARCHMENT PAPER

BABY ONESIE



*You've Anchored
My Heart...*

L₂ O₂ V₄ E₁

7 lbs
4 oz

STEP ONE

OPENING A DESIGN PROGRAM OF CHOICE, DESIGNATE HALF THE PAGE TO A PATTERN, DESIGN OR GRAPHIC. THIS WILL SERVE AS THE PATTERN INSIDE OF THE ANCHOR.

STEP TWO

TYPE THE TEXT "YOU'VE ANCHORED MY HEART" ON THE REMAINING HALF OF THE DOCUMENT. PRINT OUT THE DOCUMENT ON THE INKJET TRANSFER PAPER.

STEP THREE

USING THE ECRAFT, CUT OUT THE ANCHOR (FROM THE WATERLIFE SD IMAGE CARD) ON THE PATTERNED SIDE OF THE TRANSFER PAPER.

STEP FOUR

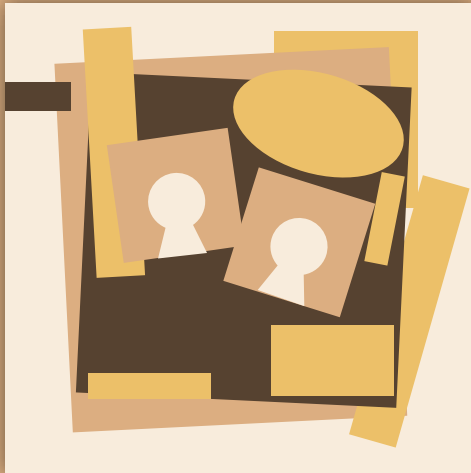
SET IMAGE FACE DOWN ON ONESIE AND COVER WITH PARCHMENT PAPER. IRON ON AND REPEAT FOR THE REST OF THE GRAPHICS AND WORDING YOU WOULD LIKE TO APPLY ONTO THE ONESIE.

DESIGNED BY LYSSA ZIMMERNAN

MINI ME

LAZY PUPPY LAYOUT

DESIGNED BY JAZMIN GIBBONS



SUPPLIES

Washi Tape
Echo Park Cardstock
eCraft Electronic Cutting System
eCraftshop Design Software

Open eCraftshop
Design Software
&
Type Desired
Text Embellishments
For The Layout

Load Echo Park
Cardstock Into The eCraft
Electronic Cutting System
&
Cut Designs From The
eCraftshop Design
Software



Follow The Layout Template
(Above) To Position Your Photos,
Embellishments, And Washi Tape.

TIP
Placing 'Play'
At The Bottom
Of The Layout
Guides The Eye To
Travel Down The Page.



LOVE YOU CARD

SUPPLIES

eBosser Automatic Embosser & Die Cutter
Regency Embossing Folder by Craftwell
eCraft Electronic Cutting System
eCraftshop Design Software
Colored Cardstock
Embellishments
Glue or other Adhesive



STEP ONE

Using a solid color cardstock, cut out the card template via the eCraft Electronic Cutting System by using eCraftshop Design Software.

STEP TWO

Using Craftwell's Regency Embossing Folder, emboss the cut cardstock. If necessary, match up the pattern so that you may finish out the pattern if the paper is larger than the embossing folder.

STEP THREE

Embellish with pictures, cut outs, and words using the eCraft and eBosser. Design for any occasion!



Designed By Debi Tullier

CLASSY CHIC ORNAMENTS

DESIGNED BY KIM GAUGHAN

SUPPLIES

eBosser Automatic Embosser & Die Cutter
Paris Girl Collection by Carta Bella
Vintage Dies by Cuttlebug/ProvoCraft
Create A Flake Two Shapeabilities Dies by
Spellbinders
Pop Dots
Scotch Quick Dry Adhesive
Ribbon

1

Use the 'Create a Flake 2' die to cut 3 snowflakes. Use the 'Vintage Dies' to cut an edged vintage square with the eBosser.

4

Use a slip knot to attach the ribbon to the big snowflake, weaving it through the fancy edged square die. A small amount of glue keeps ribbon in place.

2

Adhere the small snowflake onto the middle snowflake with pop dots. Adhere the middle snowflake onto the big snowflake with pop dots.

5

At the top of the square, make a knot and leave the ends long enough to tie a ribbon around the tree branch.

3

Use a pop dot to adhere a pink round sticker word (example- 'smile' from the 'Carta Bella' sticker sheet) over the center of the smallest snowflake.

BUTTONS & BORDERS



SUPPLIES

Artistic Suite V6
Dongle
External Mouse
eCraft Electronic Cutting System
USB Memory Stick
Template Material
Backing Board
Transfer Tape
Assorted Sizes of Crystal AB Rhinestones
Plastic Tray
Positioning Brush
Iron and Ironing Board
Silicon Press Sheet
Press Cloth or Handkerchief



STEP ONE

Open Creative DRAWings 6 > Create New > Next .
Then Select Standard Normal Light > Next .

STEP TWO

Select New Graphic > Finish.

STEP THREE

Left click on the Create Shape to expand the selection. Select Create Ellipse.

STEP FOUR

Hold down the Control key at the same time you left click and pull a circle on the screen. This will create a perfect circle.

STEP FIVE

Select the circle. Adjust the Width to .375 (3/8")

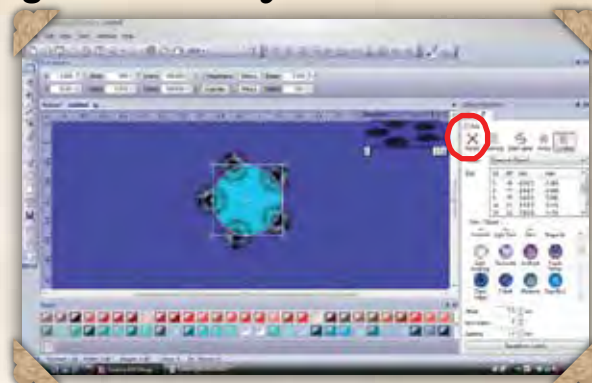


STEP SIX

Change the Fill to None.

STEP SEVEN

Change the Line to Crystal.

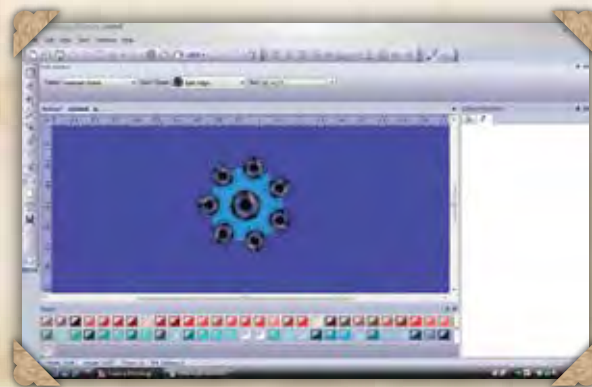


STEP EIGHT

Change the size to 10.

STEP NINE

Select the Crystal tool. Adjust the size to 16. Place a crystal in the center of the circle to create a cluster.



STEP TEN

File > Export > Crystals/Cutter.

STEP ELEVEN

Load the template material into the cutter and cut the template.

NOTE: This is the perfect size for covering a 3/4" or 7/8" button form.

Once the crystal cluster is created, duplicate a number of clusters to create a border. The alignment tools keep everything level and evenly spaced! Here's how:

STEP ONE

Select All (Control A).

STEP TWO

Right click on the cluster and select Group.



STEP THREE

Change the Zoom to 100%. The screen will have a ruler at the upper edge to help us place our clusters of crystals.

STEP FOUR

Use Duplicate to add clusters. Create a row of clusters about 8" long.



STEP FIVE

Select All (Control A). Click on Align Bottoms.

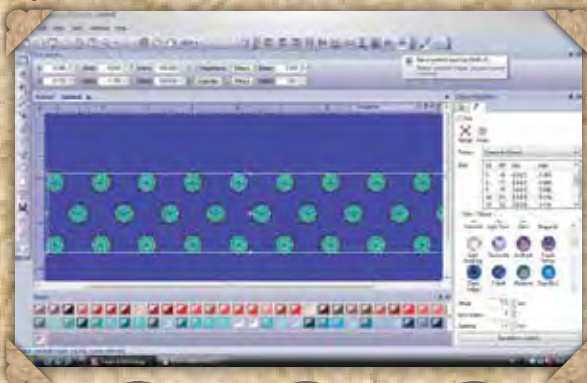


STEP SIX

The clusters are now all in a straight row. Next, click on Equal Horizontal Spacing. This creates a perfectly spaced border of crystals, ready to export to the cutter.

STEP SEVEN

But there's more! We can use the same set of alignment tools to create a border with multiple rows by grouping our first row, and then using Duplicate to create more rows. Position the rows, and use Equal Vertical Spacing to perfectly space the wide border.



STEP EIGHT

Load the template material into the cutter and cut the template.

APPLYING CRYSTALS

Peel the template material from the backing & adhere to template backing. Notice that there are two sizes of holes in the template.

Place the template in a tray, pouring a generous amount of size SS 16 crystals over the template. Use the positioning brush to move the crystals from side to side over the template. The crystals position themselves in the larger template holes right side up.

Carefully lift the template from the tray and pour the remaining crystals back into their container. Place the template back in the tray.

Repeat the process with size SS 10 crystals.

Cut a piece of transfer tape the size of the template. Position the tape over the crystals and smooth in place. Gently lift the tape with the crystals adhered.

Position the transfer tape and crystals over the fabric.

Place the silicon pressing sheet on the surface of the Artistic Press, or if using an iron and ironing board, place the silicon sheet on the ironing board.

Position the fabric with transfer tape and crystals on top of the silicon sheet, and cover with a press cloth or handkerchief. Apply pressure with the Artistic Press or iron. Heat for approximately 40 seconds.

We used clusters of crystals for the first two lessons, but there are other shapes that are beautiful as buttons and borders. For our third lesson, let's create a small heart. Here's how it's done:

STEP ONE

Our heart is drawn freehand. Select the Bezier tool. Click on the screen, creating a heart shape.

STEP TWO

Right click when the shape is complete. Use the Edit Nodes tool, adjust the shape until you have the perfect heart. Size the heart to .50 in width. This combination of tools can be challenging, but practice makes perfect.

STEP THREE

Change the Line to Crystals. Adjust the size of the crystals to 10.

STEP FOUR

Finished Heart!

This is the perfect size for 7/8" button forms shown in our samples. It is also the perfect little heart accent as shown on the Sew4Home 'Tie the Knot' napkin wraps.

Just like the cluster, we can create borders by duplicating the heart motif and using the alignment tools. Or alternate the heart and the cluster for a more elaborate border.

Export the file to the cutter. Be sure to check 'As One Template' because of the two sizes of crystals used in the design.

TIP

When using an iron, it is important to apply steady pressure **WITHOUT** moving the iron. This ensures that the crystals will stay in place during the bonding period.



BRIDESMAID'S CLUTCH

SUPPLIES

Artistic Suite V6
Dongle
External Mouse
eCraft Electronic Cutting System
USB Memory Stick
Template Material
Backing Board
Transfer Tape
Rhinestones In Assorted Sizes & Colors
Plastic Tray
Positioning Brush
Iron & Ironing Board
Silicon Press Sheet
Press Cloth or Handkerchief
Fashion Clutch
Swarovski Crystals, Crystal AB, size SS16



STEP ONE

Open Creative DRAWings 6 > Create New > Next.

STEP TWO

Select Faillie 1 > Next.

STEP THREE

New Graphic > Finish.

STEP FOUR

Select Text tool.

STEP FIVE

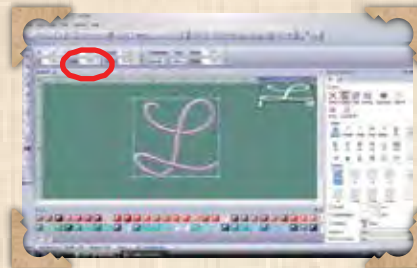
Select the font 'Wendy'.

STEP SIX

Left click on screen to generate a cursor. Type in the desired initial.

STEP SEVEN

Select and adjust the Height to 2.5. Press Enter.



STEP EIGHT

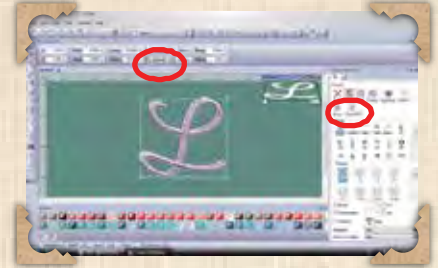
Create a second letter by clicking Duplicate.

STEP NINE

Move the duplicate letter slightly to the side of the first letter to create a 'shadow'.

STEP TEN

Change the Fill to Crystal and select crystal size 10.



STEP ELEVEN

Adjust the Spacing to 1.5. Press Enter.

STEP TWELVE

File > Export > To Crystals/Cutters. Load the template material into the cutter. Cut template.

APPLYING CRYSTALS



Peel the template material from the backing & adhere to template backing. Notice that there are two sizes of holes in the template.

Place the template in a tray, pouring a generous amount of crystals over the template. Use the positioning brush to move the crystals from side to side over the template. The crystals position themselves in the larger template holes right side up.

Cut a piece of transfer tape the size of the template. Position the tape over the crystals and smooth in place. Gently lift the tape with the crystals adhered.

Embroider the single letter on the clutch, positioning it as desired before construction.

Place the silicon pressing sheet on the surface of the Artistic Press, or if using an iron and ironing board, place the silicon sheet on the ironing board.

TIP

When using an iron, it is important to apply steady pressure **WITHOUT** moving the iron. This ensures that the crystals will stay in place during the bonding period.

Place the embroidery on the silicon sheet. Position the crystal letter over the embroidered letter, so that it creates a shadow effect.

Cover with a press cloth or handkerchief. Apply pressure with the Artistic Press or iron. Heat for approximately 40 seconds.

Make one for each bridesmaid in the wedding party. The template and transfer tape can be reused over and over again!

ADORABLE DOG LEASH HOLDER

DESIGNED BY JAZMIN GIBBONS



SUPPLIES

WOOD PLAQUE (WITH NAIL HOLE ON BACK)
SAND PAPER
(2) METAL HOOKS
SCRAPBOOK PAPER
BROWN CARDSTOCK
ACRYLIC PAINT (TWO SHADES OF BROWN)
MODGE PODGE
ECRAFT ELECTRONIC CUTTING SYSTEM
DOG IMAGE (AVAILABLE AT ECRAFTCENTRAL.COM)
JEN ALLYSON DESIGNS SD IMAGE CARD



INSTRUCTIONS



STEP ONE

SAND WOODEN PLAQUE (SOME OF THESE ARE ALREADY SANDED, BUT I LIKE TO DO IT OVER AGAIN WHEN I MODGE PODGE TO BE SURE THINGS ARE SUPER SMOOTH).

STEP TWO

CLEAN PLAQUE TO MAKE SURE THERE IS NO DUST LEFTOVER. PAINT EDGES.

STEP THREE

APPLY MODGE PODGE TO SURFACE AND APPLY SCRAPBOOK PAPER.

STEP FOUR

LET DRY, THEN MODGE PODGE OVER THE TOP OF THE PAPER.

STEP FIVE

TAKE YOUR CARDSTOCK AND INSERT INTO YOUR ECRAFT. CONNECT TO ECRAFTSHOP SOFTWARE AND CUT DOG IMAGE.

STEP SIX

FOR A SHADOW EFFECT, CUT DOG IN SHADOW MODE WITH A LIGHTER CARDSTOCK. SET IMAGES ASIDE.

STEP SEVEN

INSERT YOUR SD CARD INTO THE ECRAFT AND CUT OUT A FRAME WITH YOUR PATTERNED SCRAPBOOK PAPER.

STEP EIGHT

APPLY EXTRA LAYER OF MODGE PODGE TO TOP OF PLAQUE AND LAY YOUR FRAME & DOG IMAGE ON TOP. MODGE PODGE OVER THOSE IMAGES UNTIL WELL ADHERED AND DRY.

STEP NINE

POSITION YOUR HOOKS TO THE DESIRED SPOT ON YOUR PLAQUE AND DRILL SOME SCREWS TO HOLD THEM IN PLACE.

STEP TEN

HANG UP YOUR NEW DOG LEASH HOLDER AND USE IT!

WISHING WELL CARD

SUPPLY LIST

eBOSSER AUTOMATIC EMBOSSESSER & DIE CUTTER
CARD BASE CUT TO A2 SIZE (3 COLORS)
WHITE CARDSTOCK FOR FLOWER DIE CUTS
PAPERTREY INK ROSIE POSIE STAMP SET
PAPERTREY INK ROSIE POSIE DIES
SENTIMENT STAMP
PAPERTREY INK MAT STACK #3 DIE
PAPERTREY INK COVER PLATE HARLEQUIN DIE
PAPERTREY INK ROYAL VELVET
PAPERTREY INK WINTER WISTERIA
PAPERTREY INK SIMPLY CHARTREUSE
DOUBLE SIDED TAPE
LIQUID & FOAM ADHESIVES



DESIGNED BY: DENISE O'CONNOR

INSTRUCTIONS

STEP ONE:

TAKE CARDSTOCK AND DIE CUT WITH THE COVER PLATE DIE FOR CARD FRONT USING THE eBOSSER.

STEP TWO:

USE MINIMAL LIQUID ADHESIVE, ADHERE TO CARD BASE.

STEP THREE:

USING THE eBOSSER, DIE CUT THE MAT DIE IN THE SAME COLOR CARDSTOCK AND THE FLOWER DIES IN THE WHITE CARDSTOCK.

STEP FOUR:

STAMP FLOWERS AND LEAVES ON THE COORDINATING DIE CUTS.

STEP FIVE:

STAMP SENTIMENT ON MAT DIE CUT.

STEP SIX:

CUT A STRIP OF RIBBON SLIGHTLY SMALLER THAN THE CARD BASE AND ADHERE TO CARDBASE.

STEP SEVEN:

ADD A SMALL PIECE OF SCOR-TAPE IN THE MIDDLE OF THE RIBBON.

STEP EIGHT:

TAKING RIBBON, ADHERE IT TO HALF OF THE ADHESIVE AND RUN THE RIBBON TO ONE SIDE, LOOPING IT UP AND OVER SO THAT IT ADHERES TO THE OTHER HALF OF THE ADHESIVE.

STEP NINE:

REPEAT UNTIL YOU HAVE ACHIEVED THE DESIRED NUMBER OF LOOPS.

STEP TEN:

USING FOAM ADHESIVE ON EITHER SIDE OF THE RIBBON LOOPS, ADHERE THE MAT DIE.

STEP ELEVEN:

ADD FLOWERS AND LEAVES ON TOP OF THE MAT DIE.

BRIGHT FUTURE LAYOUT

DESIGNED BY JAZMIN GIBBONS



SUPPLIES

6x6 Paper Stack/ My Minds Eye
White Cardstock
eCraft Electronic Cutting System
eCraftshop Design Software
eCraftcentral Images of Choice
Paint
Xyron Sticker Maker
3D Dots
Pictures
Glue
Dear Lizzy Stamp
Washi Tape
Black Tire Paper from Worldwin Paper
Black Pen

STEP ONE

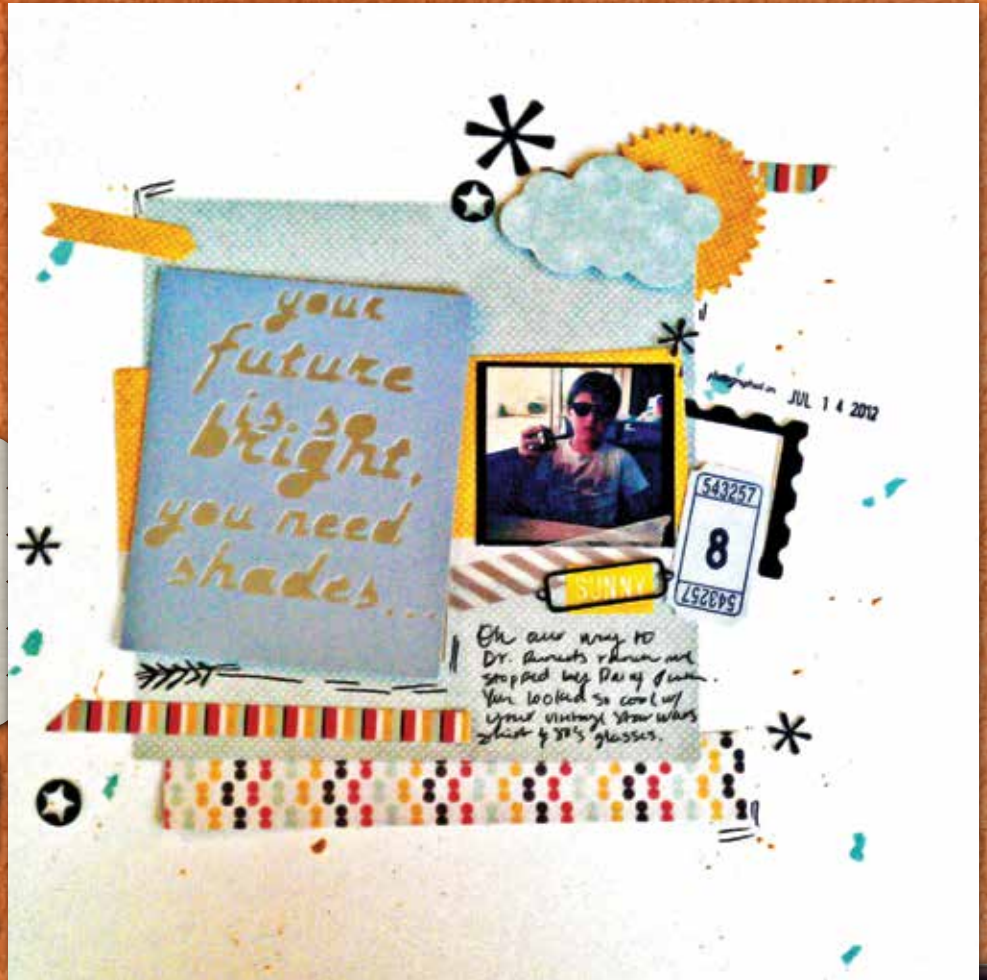
Open eCraftshop Design Software and type the desired quote onto the virtual cutting grid. Change font style to the desired font. Using the basic shape toolbar, place a rectangle over the words to create a frame. Send to the eCraft to cut.

STEP TWO

Position reflective paper by Worldwin behind the cut frame and words to add shine.

STEP THREE

For stars, tags, mailing stamp frame, sun and cloud, download desired images from eCraftcentral.com and cut them using eCraftshop Design Software and black tire paper.



STEP FOUR

Send cut images through the Xyron Sticker maker for seamless glueing.

STEP FIVE

Use 3D dots to raise the sun and cloud image. Position them on the top corner of the page layout.

STEP SIX

Use a thin black marker to add marks, arrows, and a frame to the page.

SEASON'S CELEBRATION CARD

DESIGNED BY: DENISE O'CONNOR

EBOSSER AUTOMATIC EBOSSER & DIE CUTTER

CARD BASE CUT TO A2 SIZE

CARD FRONT CARDSTOCK CUT TO 3.75" x 5"

CARDSTOCK FOR LABEL

PAPERTREY INK SNOWFLAKE MEDLEY STAMP SET WITH COORDINATION DIES

CUTTLEBUG SNOWFLAKE EMBOSSING FOLDER

PAPERTREY INK FRAMED OUT #8 LABEL STAMP SET WITH COORDINATING DIE

PAPERTREY INK VINTAGE CREAM INK PAD FINE LINEN, AND KRAFT

PAPERTREY INK FINE LINEN INK PAD

PAPERTREY INK KRAFT INK PAD

SCOTCH TAPE

FOAM ADHESIVE

TEMPORARY ADHESIVE



INSTRUCTIONS

STEP ONE

USING THE SNOWFLAKE DIES, LINE THEM UP ON YOUR CARD FRONT CARDSTOCK AND TAPE IN PLACE IF NEEDED.

STEP TWO

RUN THROUGH THE EBOSSER AND SAVE THE POSITIVE SNOWFLAKES FOR LATER USE.

STEP THREE

USING A SMALL AMOUNT OF TEMPORARY ADHESIVE, ADHERE THE CARD FRONT TO THE CARD BASE.

STEP FOUR

STAMP THE COORDINATING SNOWFLAKES IN THE OPENINGS OF THE CARD FRONT.

STEP FIVE

REMOVE THE CARD FRONT, AND REMOVE THE TEMPORARY ADHESIVE.

STEP SIX

INSERT CARD FRONT INTO EMBOSSING FOLDER AND RUN THAT THROUGH THE EBOSSER

STEP SEVEN

USING FOAM ADHESIVE, ATTACH THE CARD FRONT TO THE CARD BASE, MAKING SURE THAT THE OPENINGS LINE UP WITH THE STAMPED SNOWFLAKES.

STEP EIGHT

USING THE LABEL DIE, DIE CUT YOUR LABEL WITH THE EBOSSER AND STAMP WITH THE COORDINATING STAMPS AND SENTIMENT.

STEP NINE

ADHERE TO CARD WITH FOAM ADHESIVE.

Crafting With The Craftwell eCraft and eBosser



The Official Craftwell Blog features fabulous, cutting edge projects made possible by the eCraft and eBosser. Indulge in a world of creative inspiration made possible with the eBosser. The Craftwell design team shares their tips and tricks of the trade with impressive projects for all occasions. Whether interested in new techniques, aiming to get the most out of Craftwell products, or simply enjoying some eye candy, this blog is a must-see for quilters and crafters of all walks of life.

Dedicated to Inspiring Creativity!



 craftwell

**AVAILABLE AT
JOANN.COM**



There is a difference
in the details...

Proudly Manufactured in the U.S.A.
www.cheerylynndesigns.com

eBosses™

EMBOSSING JUST REACHED NEW DIMENSIONS IN LETTER & A4 SIZES

IN STOCK NOW. ORDER TODAY

EMBOSSING GETS BIG

Craftwell's exclusive letter and A4 size embossing folders are now available. Take it to the next level with a wide variety of unique designs for cardmaking and crafting. Choose from full page patterns, bi-folds, tri-folds, and other styles.

VISIT CRAFTWELLUSA.COM FOR LATEST STYLES



VARIETY OF STYLES

