

MOTHER IS LOVE

Designed by Tricia Wilson Nguyen of Thistle Threads

Materials needed:

Kreinik Silk Heritage Collection • 36-count Edinburgh Linen (Zweigart) in Sand color • #28 Tapestry needle

Instructions:

Each square on the graph equals one fabric thread. *Stitch this design using tent stitch over one thread.* Use one strand of Silk Mori. For tips on using Silk Mori, visit the Silk Mori page on www.kreinik.com. (Note: if the fabric has a lot of sizing, ie feels stiff, you may wish to use a larger needle to open the hole in the fabric so that Silk Mori can move through smoothly).

Cut two pieces of linen. The first one 8" x 8" for the large heart, and the second one 6" x 6" for the small heart. Center each design on the appropriately sized fabric. On the small heart, stitch your initials in the spaces provided using Silk Mori 3017 using the accompanying alphabet. The year is also stitched on the small heart using 3017 as indicated.

Color Key:

- 4 Silk Mori 2016 Dark Gold
- Silk Mori 3017 Vy Dk Coral
- Silk Mori 4204 Med. Sage
- × Silk Mori 4206 Dark Sage
- ⊕ Silk Mori 1096 Dk Wood Violet
- ▼ Silk Mori 6127 Vy Dk Dusty Lavender
- + Silk Mori 7136 Medium Bark
- / Silk Mori 7087 Vy Dark Straw
- || Silk Mori 2014 Medium Gold
- ≡ Silk Mori 8086 Dark Gray

Finishing:

Our model was professionally finished by Marcia Brown at The Binding Stitch. The design is worked in two pieces that are linked together with twisted cord made of matching colors in embroidery floss. The large heart has more cording at the top so that it can be hung on a door knob, bed post, on the wall, etc. The smaller heart attaches to the large one right below the point and has a tassel of embroidery floss on the end.

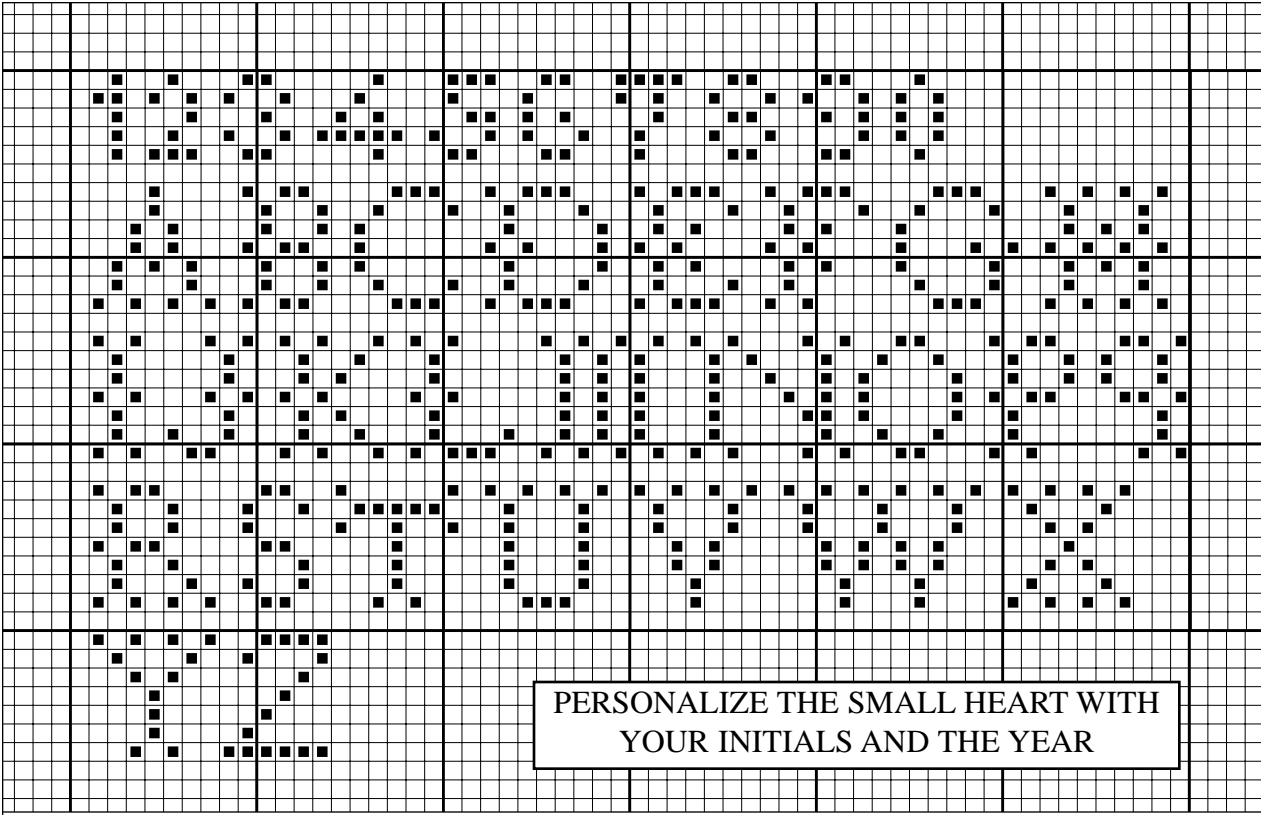
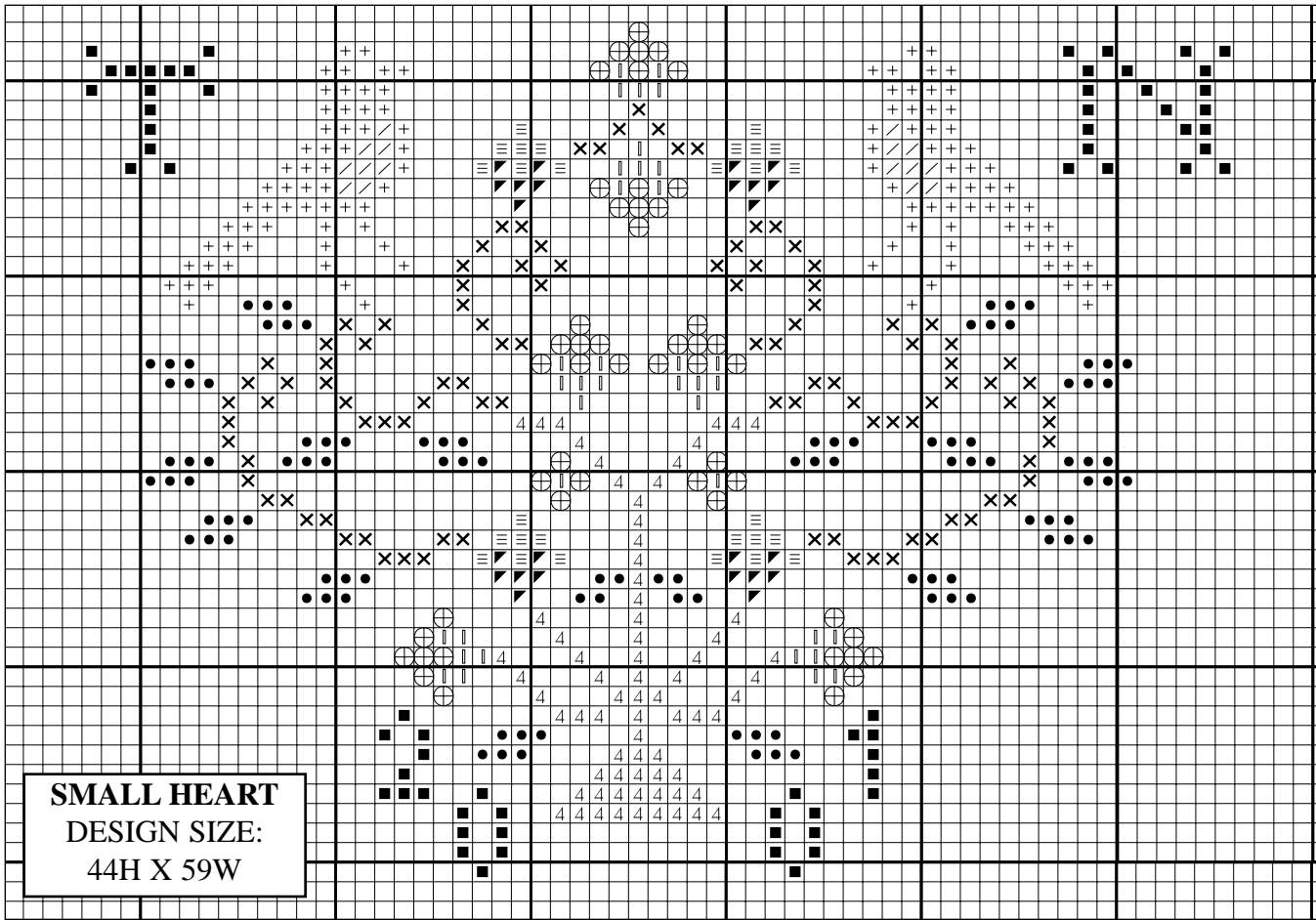
Alternatively, the two designs could be framed by heart-shaped purchased frames, or framed together with a specially-cut matboard of heart shapes.

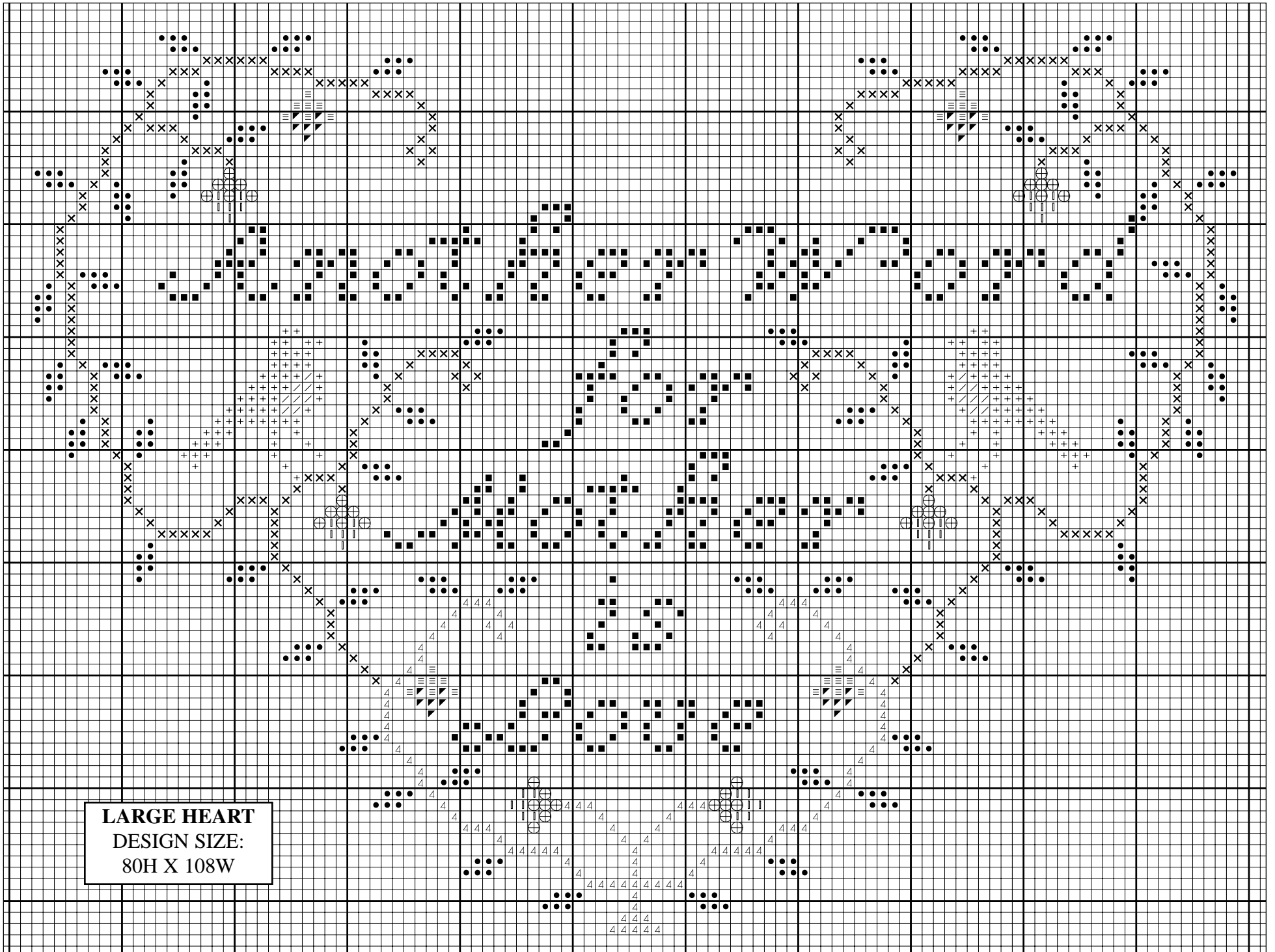
© Copyright 2001 Kreinik Mfg. Co., Inc. and Tricia Wilson Nguyen. This design may be downloaded and stitched for personal use, not sold.



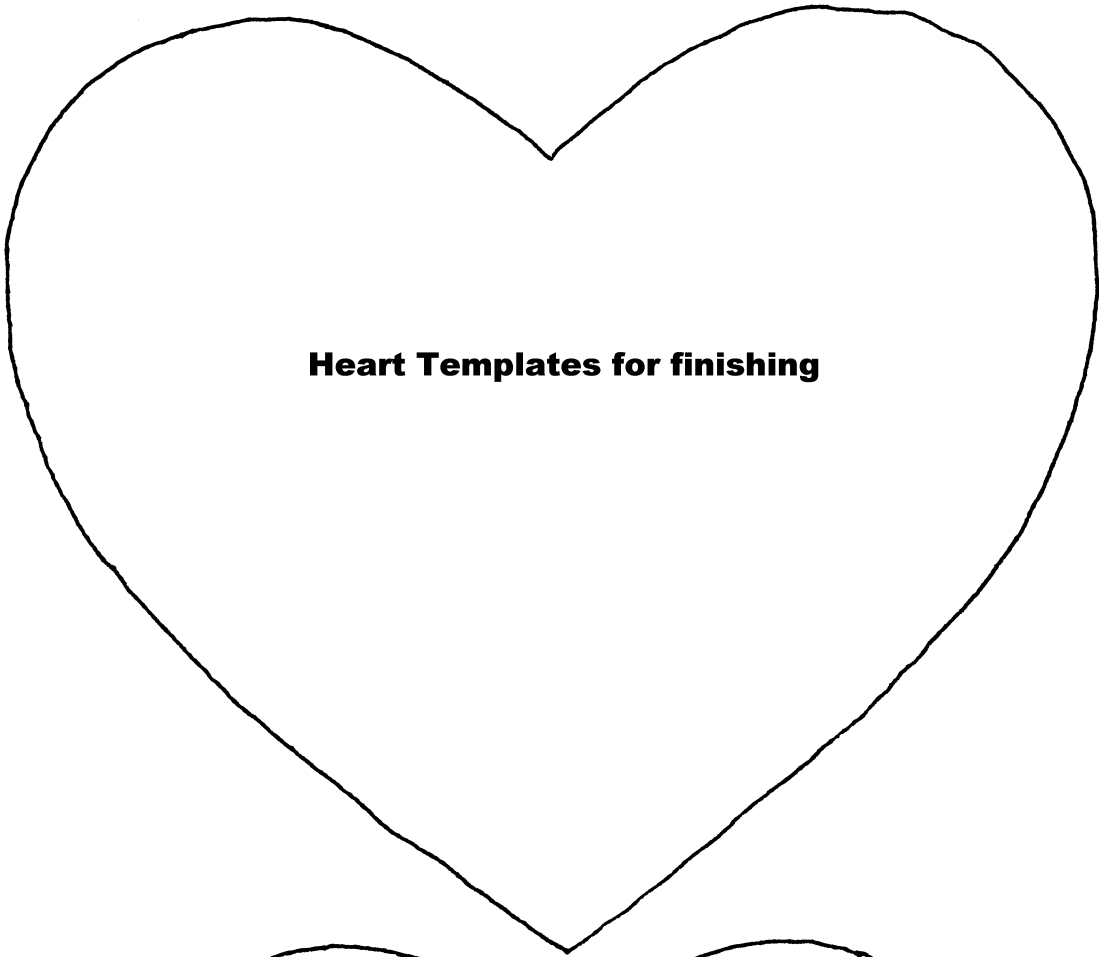
Kreinik Consumer Information:

1-800-537-2166 or web site www.kreinik.com or email kreinik@kreinik.com





LARGE HEART
DESIGN SIZE:
80H X 108W



Heart Templates for finishing

