

SNO
HAT

MILLAMIA
SWEDEN



SNO HAT

SKILL LEVEL Beginner / Improving

SIZES

To fit age 6-12 12-24 months

MATERIALS

MillaMia Naturally Soft Aran is exclusively available at www.lovecrafts.com

- Two 50g/1 ¾oz balls of MillaMia Naturally Soft Aran in Pink Glaze (223)
- One pair of 5mm (US 8) knitting needles

TENSION / GAUGE

18 sts and 24 rows to 10cm/4in square over st st using 5mm (US 8) needles.

HINTS AND TIPS

This pixie-like hat is a delightful compliment to the Sno Cardigan and Sno Romper. All the Sno patterns in this collection follow a simple knit and purl stitch combination to create this delightful, simple and soft textured pattern. The great thing is that it is a consistent and thus easy to memorise stitch repeat. The hat is knitted flat and seamed.

SPECIAL ABBREVIATIONS

S2kpo - slip next 2 sts onto right hand needle as if to knit them together, knit next st, then pass 2 slipped sts over. See also next page.

NOTE

When working from Charts right side rows are read from right to left and wrong side rows are read from left to right.

SUGGESTED ALTERNATIVE COLOURWAYS



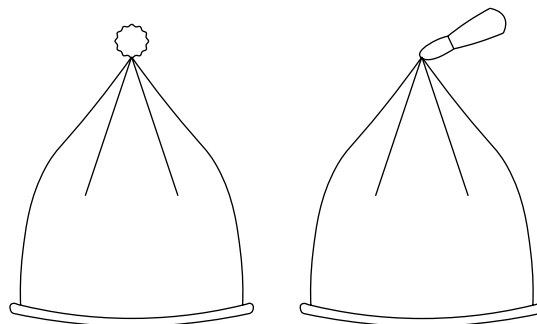
Powder
Blue
222

Ivory
221

Oat
228

Sky
Blue
126

Petal
122



ABBREVIATIONS

| | |
|-----------|---|
| alt | alternate |
| approx | approximately |
| beg | begin(ning) |
| cont | continue |
| dec | decrease(ing) |
| folll(s) | follow(s)(ing) |
| g-st | garter stitch |
| inc | increase(ing) |
| k or K | knit |
| k2 tog | knit two stitches together |
| m1 | make one stitch by picking up the loop lying before the next stitch and knitting into back of it |
| m1p | make one stitch by picking up the loop lying before the next stitch and purling into back of it |
| mths | months |
| p or P | purl |
| p2 tog | purl two stitches together |
| patt | pattern |
| psso | pass slipped stitch over |
| pwise | purlwise |
| rib2 tog | rib two stitches together according to rib pattern being followed |
| rem | remain(ing) |
| rep | repeat(ing) |
| rev st st | reverse stocking stitch |
| skpo | slip one, knit one, pass slipped stitch over – one stitch decreased |
| sl | slip stitch |
| st(s) | stitch(es) |
| st st | stocking stitch |
| tbl | through back of loop |
| tog | together |
| yf | yarn forward |
| yo | yarn over |
| yon | yarn over needle to make a st |
| yrn | yarn round needle |
| y2rn | wrap the yarn two times around needle. On the following row work into each loop separately working tbl into second loop |
| ytb | yarn to back |
| ytf | yarn to front |
| [] | work instructions within brackets as many times as directed |

UK AND US KNITTING TRANSLATIONS

| UK | US |
|-------------------|--------------------|
| Cast off | Bind off |
| Colour | Color |
| Grey | Gray |
| Join | Sew |
| Moss stitch | Seed stitch |
| Tension | Gauge |
| Stocking stitch | Stockinette stitch |
| Yarn forward | Yarn over |
| Yarn over needle | Yarn over |
| Yarn round needle | Yarn over |
| y2rn | yo2 |

KNITTING NEEDLE CONVERSION CHART

| Metric (mm) | US size |
|-------------|---------|
| 2 | 0 |
| 2.25 | 1 |
| 2.5 | 1 |
| 2.75 | 2 |
| 3 | 2 |
| 3.25 | 3 |
| 3.5 | 4 |
| 3.75 | 5 |
| 4 | 6 |
| 4.25 | 6 |
| 4.5 | 7 |
| 5 | 8 |
| 5.5 | 9 |
| 6 | 10 |
| 6.5 | 10.5 |
| 7 | 10.5 |
| 7.5 | 11 |
| 8 | 11 |
| 9 | 13 |
| 10 | 15 |
| 12 | 17 |



TO MAKE

Using 5mm (US 8) needles cast on 66(74) sts.

Starting with a k row work 8 rows in st st.

Work in patt from Chart 3.

1st row (right side) Work 1 st before patt rep of row 1, [work across 4 st patt rep of row 1] 16(18) times, work 1 st after patt rep of row 1.

2nd row Work 1 st before patt rep of row 2 [work across 4 st patt rep of row 2] 16(18) times, work 1 st after patt rep of row 2. These 2 rows set the Chart.

Work a further 12(16) rows, ending row 2.

Work in patt from Chart 2.

1st row Work 1 st before patt rep of row 5, [work across 4 st patt rep of row 5] 16(18) times, work 1 st after patt rep of row 5.

2nd row Work 1 st before patt rep of row 6, [work across 4 st patt rep of row 6] 16(18) times, work 1 st after patt rep of row 6. These 2 rows set the Chart.

Work a further 6 rows, ending row 6.

Work in patt from Chart 1.

1st row Work 1 st before patt rep of row 1, [work across 4 st patt rep of row 1] 16(18) times, work 1 st after patt rep of row 1.

2nd row Work 1 st before patt rep of row 2, [work across 4 st patt rep of row 2] 16(18) times, work 1 st after patt rep of row 2. These 2 rows set the Chart.

Work a further 6 rows, ending row 8.

Cont in st st.

Dec row K7(8), [s2kpo, k13(15)] 3 times, s2kpo, k8(9).
58(66) sts.

Work 3 rows.

Dec row K6(7), [s2kpo, k11(13)] 3 times, s2kpo, k7(8).
50(58) sts.

Work 3 rows.

Dec row K5(6), [s2kpo, k9(11)] 3 times, s2kpo, k6(7).
42(50) sts.

Work 3 rows.

Dec row K4(5), [s2kpo, k7(9)] 3 times, s2kpo, k5(6).
34(42) sts.

Work 3 rows.

Dec row K3(4), [s2kpo, k5(7)] 3 times, s2kpo, k4(5).
26(34) sts.

Work 3 rows.

Dec row K2(3), [s2kpo, k3(5)] 3 times, s2kpo, k3(4).
18(26) sts.

Work 3 rows.

Dec row K1(2), [s2kpo, k1(3)] 3 times, s2kpo, k2(3).
10(18) sts.

Work 3 rows.

2nd size only

Dec row K1, [s2kpo, k1] 3 times, s2kpo, k2.
10 sts.

Work 3 rows.

Both sizes

Dec row [K2 tog] 5 times. 5 sts.

Break off yarn thread through rem sts, pull up and secure.

Join seam, reversing seam on the roll of the hem.

Make small pompon or a tassel and attach to top of hat.

CHART 3

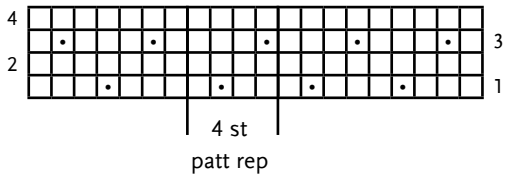


CHART 2

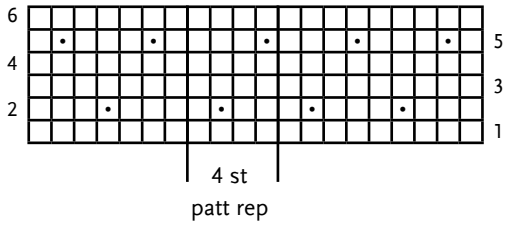
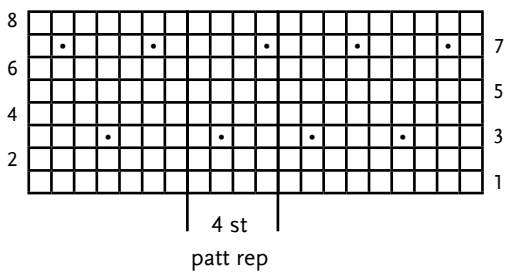


CHART 1



KEY

- Purl on the right side. Knit on the wrong side
- Knit on the right side. Purl on the wrong side



For more patterns & yarn visit
www.lovecrafts.com



Scandi simplicity, for a hygge life



Artisan designs & hand-dyed yarns



The Yarn Collective

PAINTBOX
YARNS

Debbie Bliss

Play with color & free patterns!



Contemporary classics to love always



-lovecrafts-

Shop our brands exclusively at [lovecrafts.com](https://www.lovecrafts.com)

FREE shipping on orders over \$60 + 15% OFF* with code: **HOLIDAYS15**

*Terms & Conditions apply