

13

DIY HOME DECOR IDEAS, PAPER CRAFTS, AND MORE

favecrafts



LIVE THE LIFE
YOU LOVE

FEATURING PROJECTS FROM:



13

DIY HOME DECOR IDEAS,
PAPER CRAFTS, AND MORE

TABLE OF CONTENTS

Vintage DIY Coat Rack	5
by DESIGN MASTER®	
Oly-Fun Owl Craft Idea	8
by Fairfield	
Love Life DIY Pallet Craft	12
by Therm O Web	
Celebration Homemade Gift Wrap	15
by Sizzix	
Honeycomb Hat & Crochet Cowl	18
by Simplicity Creative Group	
Bohemian Stamped DIY Pillow	23
by Plaid	
Isobel's Afghan Pattern	26
by Premier	
Loonie Bird Marionette	30
by FloraCraft	
Herringbone DIY Painted Rug	33
by Testors	
DIY Adjustable Bangle Bracelet	36
by Beadalon	
Knook Infinity Scarf Pattern	40
by Leisure Arts	
Easy Watercolor Die Cut Card	45
by Create and Craft	
Constellation Postcards	48
by Sakura	

13

DIY HOME DECOR IDEAS, PAPER CRAFTS, AND MORE

EDITOR'S NOTE

Be the do-it-yourself darling you have always wanted to be when you craft and create the DIY crafts compiled in this collection of stunning, simple, and downright adorable craft project ideas for the creative soul in all of us. The craft project ideas located in *13 DIY Home Decor Ideas, Paper Crafts, and More* all come equipped with full-length instructions and crafting tips for a wide variety of crafting projects. From learning how to make pallet craft ideas like the Love Life DIY Pallet Craft (pg. 11) to trendy DIY home decor pieces like the Bohemian Stamped Pillow (pg. 22), all of the DIY crafts in this collection have a little something extra to offer. You are going to love the way your home shines with homemade flair when you display these charming ideas.

This free eBook comes with 13 fully illustrated tutorials on how to make DIY crafts from your home and wardrobe, provided by some of your favorite crafting companies. Let [Plaid](#), [Sizzix](#), [Simplicity Creative Group](#), [Leisure Arts](#), [Sakura](#), [Premier Yarns](#), [FloraCraft](#), [Fairfield](#), [DESIGN MASTER®](#), [Testors](#), [Create and Craft](#), [Therm O Web](#), and _ show you how to craft today.

You can find more craft projects, great holiday gift ideas, and DIY holiday decor at www.favecrafts.com.

Our eBooks, like all our craft projects, are absolutely FREE. Please feel free to share with family and friends and ask them to sign up at our website for free newsletters from FaveCrafts.com.

13

DIY HOME DECOR IDEAS, PAPER CRAFTS, AND MORE

©Copyright 2016 by Prime Publishing LLC

All rights reserved. No part of this book may be reproduced or transmitted in any form or by any means electronic or mechanical, including photocopying, recording, or by any information storage or retrieval system, without written permission from the publisher, except in the case of brief quotations embodied in critical articles and reviews.

Trademarks are property of their respective holders. When used, trademarks are for the benefit of the trademark owner only.

fave crafts

ALLFREECROCHET

ALLFREESEWING

ALLFREECHRISTMACRAFTS

ALLFREEPAPERCRAFTS

ALLFREEDIYWEDDINGS

ALLFREECROCHETAFGHANPATTERNS

DIYideaCenter 
Do it Yourself Ideas for Everyday Life

ALLFREEKNITTING

FAVEQUILTS

 **ALLFREEKIDSCRAFTS**

ALLFREEJEWELRYMAKING

AllFreeHolidayCrafts

VINTAGE DIY COAT RACK

Project by DESIGN MASTER®



MATERIALS

- DESIGN MASTER® übermatte™ Wisteria 557
- 36" x 7 1/4" x 3/4" wood slat – pine used here
- 2 – 36" Wood trim of different patterns (leaf & ribbed pieces used here)
- 4 Wood die cut trims in varied colors (circles used here)
- 4 Drawer pulls – 2 each of varied style
- Remnant candle for wax
- Hacksaw
- Fine grade sand paper
- Wood glue or similar
- Drill and drill bits
- Needle-nosed pliers
- Paper towel
- Latex gloves

VINTAGE DIY COAT RACK

Project by [DESIGN MASTER®](#)

INSTRUCTIONS

1. Lay out patterned wood trims, die cut trims and placement of knobs on wood slat. Mark centers of any die cuts that will need a hole in its center. Mark location of the knobs on the wood slat.
2. Use a drill bit the size of the screw stem on the knob and drill a hole in any die cut trims needing a center hole. Use the same bit to drill a hole for each knob placement on the wood slat.
3. Turn the wood slat over to its backside. With a larger drill bit, drill a counter sink the depth of nut. This will keep the backside of the shelf flush when screwing the nut on the knob stem.
4. Sand the edges of the wood slates to soften edges. Remove the sanding dust.
5. With the candle, rub desired areas of the wood trims to create the worn effect. The wax will be removed later to reveal the raw wood under the paint.
6. Spray the wood slat Wisteria. Apply 2-3 coats, allowing each coat to dry between applications. Raw wood is porous and may take additional coats.
7. Wipe away the wax to reveal underlying wood on trim. Holding can about 15", mist Wisteria lightly over the exposed wood to soften.
8. When dry, spray Wisteria onto the tip of your index finger that is wrapped with paper towel. Immediately wipe away color in select areas for a washed effect. Repeat with more spray in towel as needed. On the trim used here, the leaf pattern is revealed on one trim and the ribbing highlighted on the second. You can also use DESIGN MASTER® MESS MASTER or acetone to do this step.
9. Glue the wood trims in place.
10. You will most likely need to cut down the screw stems of the knobs. Measure the cut by inserting the knob through the die cut trim and align them on the edge of the wood slat. Use a piece of tape to mark the section of stem to remove. Cut excess stem with the hacksaw.
11. Insert the knob stems through the die cut trims and then into pre-drilled holes. On the backside screw the nut over the stem. Hold it in place with needle-nosed pliers while turning the knob tight to secure. No need to glue the die cut trim in place.
12. Attach picture hanging kit on backside and, hang!



introducing...

MIST

555

übermatte™

ULTRA MATTE COLOR FINISH

A NEW spray for color expression, your style.

This quick covering, fast drying spray delivers modern, ultra matte color in a smooth finish. With strong adhesion and hard wearing color, übermatte is the ultimate change up artist.

Coming to you in a fresh palette of 12 enticing hues. Easily transform ordinary items into signature color elements for your designs. Find out more @ dmcolor.com

PEONY

550

RADISH

551

SALMON

552

LIGHT
OCHRE

553

SPROUT

554

MIST

555

LAKE

556

WISTERIA

557

CREMA

558

BEACH

559

GRAPHITE

560

INK

561



THE COLOR DESIGN
RESOURCE

dmcolor.com

©2015 DESIGN MASTER colorool, inc.

OLY-FUN OWL CRAFT IDEA

Project by Fairfield



MATERIALS

- Foam ball – 4 inch
- Oly-fun™ craft sheets – assorted colors
- Two Wiggle eyes – ¾ inch
- Marker or Pencil
- Low temp glue gun & glue sticks
- Scissors

OLY-FUN OWL CRAFT IDEA

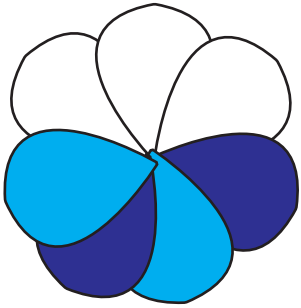
Project by Fairfield

INSTRUCTIONS

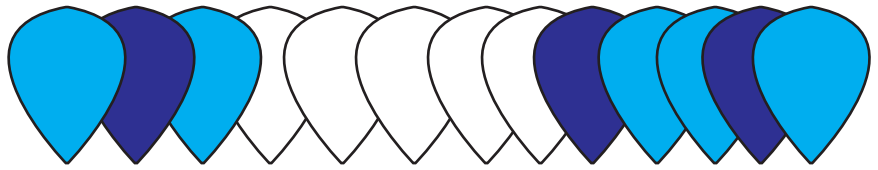
1. Print and then cut out the pattern provided. Use the marker or pencil and trace around the teardrop pattern directly onto an oly-fun™ sheet. Trace an entire row across the width of the oly-fun™ sheet.
2. Layer three pieces of oly-fun™ together and cut out the row of traced designs, cutting out three layers at once. Repeat until you have cut out approximately 30 white and 36 each of two additional colors.
3. Cover the bottom of the foam ball, adding glue to the top and bottom point of each of the teardrop shapes. Refer to the diagrams provided.
4. Glue the first row using 5 white teardrops and then working around the circumference of the ball alternating the two colors without forming a definite pattern. Add glue to the top rounded edge of the teardrop shape only, leaving the points hanging freely.
5. The second row will overlap the first with the points of the teardrops offset from the first row.
6. Continue in the manner until the entire surface of the ball is covered.
7. Cut two 2 inch and two 1 ½ inch circles from oly-fun™ in the color of your choice. Glue the smaller circle on top of the larger circle slightly offset. Glue the wiggle eye on top of the smaller circle. Repeat to create the second eye.
8. Set the two eyes slightly overlapping on top of the teardrop shape cut for the beak and glue all layers together. Note: It is best to place glue behind the eye and/or under multiple layers of oly-fun™ so that the glue does not show through the oly-fun™
9. Cut a 3 inch square of oly-fun™ in the color of your choice (head topper) and glue the point behind the eyes and beak.
10. Glue the eyes, beak and head topper, placing glue behind the eyes and back edge of the head topper only.

Fairfield™
at the heart of your project.

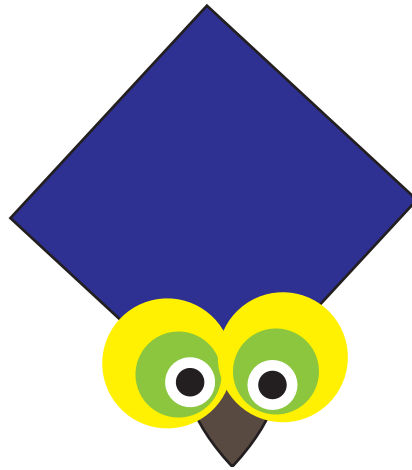
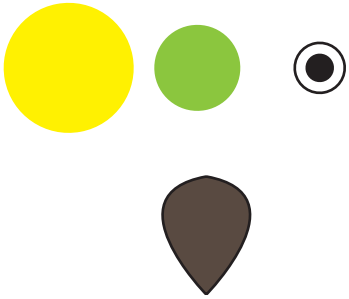
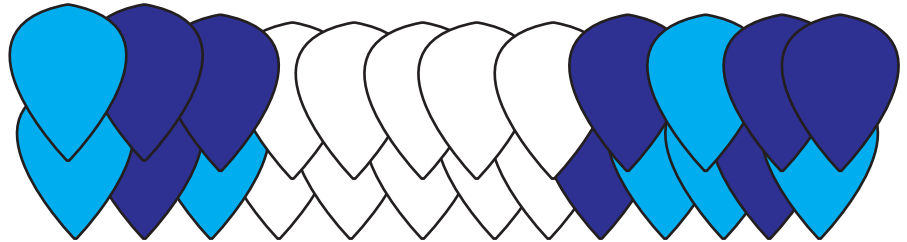
Oly the oly-fun™ Owl



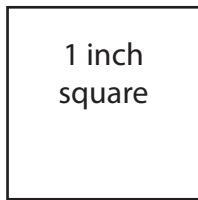
Cover the bottom of the ball with oly-fun™ cut outs



Center Front



Oly the Oly-Fun™
Owl Pattern
Feathers,& Beak



1 inch
square

Check pattern size. Square
should measure 1 inch

Oly the oly-fun™ Owl design,
diagrams and pattern by
Lorine Mason

oly-fun™ is a multi-purpose craft material
from Fairfield
Free patterns & projects at oly-fun.com



LORINE MASON OF ITS SEW LORINE



*at the heart
of your project*

Fairfield proudly supports generations of makers with products to fill, finish and freshen stuffed toys, quilts, pillows and furniture.



POLLY CARLSON OF PIECES BY POLLY



Share your project!



#polyfil #fairfieldworld #attheheartofmyproject



MORENA HOCKLEY OF MORENA'S CORNER



ERICA DIETZ OF 5 LITTLE MONSTERS



Fairfield™

POLY-FIL® | PILLOWS | BATTING | INTERFACING | FABRICS | FOAM

FairfieldWorld.com

LOVE LIFE DIY PALLET CRAFT

Project by Therm O Web

LOVE THE LIFE

YOU LIVE

LIVE THE LIFE

YOU LOVE

MATERIALS

- iCraft® Deco Foil™ Foam Adhesive Sheets
- iCraft® Deco Foil™ Transfer Sheets: Pink Melon, Gold, Teal
- Rustic wooden palette, 11-1/2"x11"
- Acrylic paint
- Tools: dies or electronic cutting system, ruler

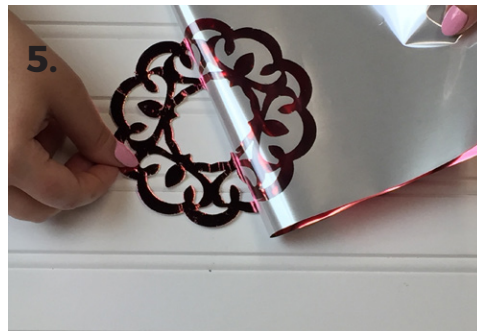
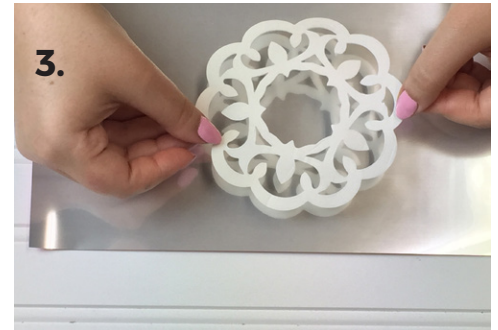
LOVE LIFE DIY PALLET CRAFT

Project by Therm O Web

INSTRUCTIONS

Note: Follow manufacturer's directions throughout. Step-out photos show a larger die-cut shape for detail; follow the same steps to create foiled letters.

1. Paint horizontal planks of palette desired color; let dry. Apply second coat; let dry.
2. Plan wording at desired size. Die cut necessary letters from Deco Foil Foam Adhesive Sheets. (Fig. 1)
3. Using photo as guide, separate words into groups by desired color. For example, LOVE is Pink Melon, LIVE is Teal and remaining words are Gold. Be sure no letters are reversed.
4. Remove paper liner from front of first foam letter. (Fig. 2)
5. Place foam letters, sticky side down, onto dull back side of desired Deco Foil Transfer Sheet. Be sure letters do not touch as adhesive is very strong. (Fig. 3)
6. Turn foil sheet over and rub over all shapes with fingertips. (Fig. 4)
7. Carefully peel away foil sheet from letters. (Fig. 5)
8. Remove paper liner from back of each letter, one at a time, and press to palette. (Fig. 6)



deco:foil™

A fun and creative way to add a foil finish to any project!



iCraft® deco:foil™ **Transfer Sheets and Adhesives** add a vibrant, metallic finish to cards, scrapbook pages, mixed media, wearables, quilts, home décor, holidays and so much more – in minutes!

Look for **NEW COLORS** in the deco:foil™ line, plus **NEW deco:foil™ PeelStick Toner Sheets** for paper crafts. Great for intricate dies or cut files, these heat-activated sheets work with a laminator to create amazing shine – no separate adhesive required. Just cut, foil, peel and stick!



www.thermoweb.com

therm·o·web
ADHESIVES & INTERFACINGS

CELEBRATION HOME MADE GIFT WRAP

Project by Sizzix



MATERIALS

- Sizzix® Big Shot™ or BIGkick™ Machine
- Sizzix® Sizzlits® Decorative Strip Die: Celebrate & Make a Wish by WhereWomenCook™ (#660890)
- Colored Cardstock
- Ribbon

CELEBRATION HOMEMADE GIFT WRAP

Project by Sizzix

INSTRUCTIONS

1. Die-cut the phrase Celebrate with colored cardstock of your choice.
2. Fold up the letters along perforation line.
3. Bend the strip so the word Celebrate nicely arches over the gift. Wrap ribbon around box and tie in a bow.





Celebrate Your Style

Let the party begin! The new Where Women Cook™ dies and Big Shot™ Machine from Sizzix® (sold separately) combine to create unique party décor for any celebration. Now it's easier than ever to make your own stylish shapes for invitations, decorations, gift packaging, favors and even the cake topper!

For more DIY party inspiration, visit us at sizzix.com/blog today.



HONEYCOMB HAT & COWL

Project by Simplicity Creative Group

Knit



Crochet



MATERIALS

Projects designed by Kristin Omdahl

Knit

- #4 worsted weight yarn: Red Heart Soft (100% acrylic), 5 oz (141 g), 256 yd (234 m) – 1 ball each
#9440 Light Grey Heather (A), #9520 Seafoam (B), #9518 Teal (C)
- Boye® 16" circular knitting needles US size 8 (5 mm) or size needed to obtain gauge
- Boye® double pointed knitting needles US size 8 (5 mm) or size needed to obtain gauge
- Stitch marker
- Yarn needle

Crochet

- #4 worsted weight yarn Red Heart Super Saver (100% acrylic), 7 oz (198 g), 364 yd (333 m) – 1 ball each
#9440 Light Grey Heather (A), #776 Dark Orchid (B), #530 Orchid (C)
- Boye® H/8 [5 mm] crochet hook size needed to obtain gauge
- Stitch marker
- Yarn needle

HONEYCOMB HAT & COWL

Project by Simplicity Creative Group

INSTRUCTIONS

Crochet Project

Abbreviations

BLsc- back loop single crochet; ch-chain; rep-repeat; rnd(s)-round(s); RS-Right Side; sc-single crochet; sl st-slip stitch; st(s)-stitch(es)

Size

Hat: 21" [53 cm] circumference to fit 22-23" [56-58 cm] head

Cowl: 28" [71 cm] circumference

Gauge

11.5 sts = 4" (10 cm) in single crochet.

To save time, take time to check gauge.

Special Abbreviations

BLsc (back loop single crochet) – Work single crochet in the back loop only.

Honeycomb Stitch (Multiple Of 6)

Rnd 1: With B, *sc in each of next 2 sc, ch 1, skip 1 sc, sc in each of next 3 sc; rep from * to last st, sc in last st.

Rnd 2: Sc in each st and ch around.

Rnds 3 and 4: Sc in each sc around.

Rnd 5: With A, *sc in each of next 2 sc, sc in ch-1 space 4 rnds below, pulling st tightly to cinch, skip the st behind st just made, sc in each of next 3 sc; rep from * around.

Rnd 6: Sc in each sc around.

Rnd 7: With C, *sc in each of next 4 sc, ch 1, skip 1 st, sc in next st; rep from * around.

Rnds 8-10: Rep Rnds 2-4.

Rnd 11: With A, *sc in each of next 4 sc, sc in ch-1 space 4 rnds below, pulling st tightly to cinch, skip the st behind st just made, sc in next st; rep from * around.

Rnd 12: Sc in each sc around. Rep Rnds 1-12 for pattern.

Hat

With A, ch 4, join with sl st in first ch to form a ring.

Rnd 1: Ch 1, 5 sc in ring; do not join. Pm in first st of rnd and move it up as you work each rnd—5 sc.

Rnd 2-4: 2 sc in each sc around—40 sc at the end of Rnd 4.

Rnd 5: *2 sc in next st, sc in next st; rep from * around—60 sc. Work Rnds 1-12 of Honeycomb Pattern three times, then work Rnds 1-6 once more.

HONEYCOMB HAT & COWL

[Project by Simplicity Creative Group](#)

INSTRUCTIONS (CONT.)

Band

Rnds 1-3: BLsc in each st around.

At end of last rnd, sl st through both loops of next st to join. Fasten off.

Cowl

With A, ch 84; being careful not to twist chain, join with sl st in first ch to form a ring.

Rnd 1: Ch 1, sc in each ch around; do not join. Pm in first st of rnd and move it up as you work each rnd—84 sc.

Rnds 2-4: BLsc in each st around. Work Rnds 1-12 of Honeycomb Pattern three times.

Final Border

Rnds 1-3: BLsc in each st around.

At end of last rnd, sl st through both loops of next st to join. Fasten off.

Simplicity
creative
group

HONEYCOMB HAT & COWL

INSTRUCTIONS

Project by Simplicity Creative Group

Knit Project

Abbreviations

BO-bind off; CO-cast on; k-knit; k2tog- knit 2 sts together; p-purl; pm-place marker; rep-repeat; RS-Right Side; sl-slip; st(s)-stitch(es)

Size

Hat: 21" [53 cm] circumference to fit 22-23" [56-58 cm] head.

Cowl: 26" [66 cm] circumference

Gauge

15.25 sts = 4" (10 cm) in Honeycomb Stitch.

To save time, take time to check gauge.

Honeycomb Stitch (multiple of 8)

Rnds 1-4 (RS): With B, *k6, sl 2 purlwise; rep from * around.

Rnd 5: With A, knit.

Rnd 6: Purl.

Rnds 7-10: With C, *k2, sl 2 purlwise, k4; rep from * around.

Rnd 11: With A, knit.

Rnd 12: Purl.

Rep Rows 1-12 for pattern.

Directions Hat

With A, CO 80 sts loosely. Pm and join into a ring, being careful not to twist.

Rnd 1: Purl.

Rnd 2: Knit.

Rnd 3: Purl.

Rnds 4-7: Rep Rnds 2-3 two more times. Work Rnds 1-12 of Honeycomb Stitch five times.

Cut B and C. Changing to double-pointed needles, (k2tog) around—40 sts. Purl 1 rnd. (K2tog) around—20 sts. Cut yarn, leaving a long tail. Thread yarn needle with yarn tail and pull tail through all remaining sts to cinch tightly. Weave in ends.

Cowl

With A, CO 96 sts loosely. Pm and join into a ring, being careful not to twist.

Rnd 1: Purl.

Rnd 2: Knit.

Rnd 3: Purl.

Rnds 4-7: Rep Rnds 2-3 two more times.

Work Rnds 1-12 of Honeycomb Stitch four times, then work Rnds 1-6 once more. Cut B and C.

Final Border

Rnd 1: With A, knit.

Rnd 2: Purl.

Rnds 3-8: Rep Rnds 1 and 2. BO. Weave in ends.

Craft a beautiful life



BOHEMIAN STAMPED DIY PILLOW

Project by Plaid



MATERIALS

- Fabric Creations™ Soft Fabric Inks - Poppy, 2 oz. Item #25977
- Fabric Creations™ Soft Fabric Inks - Blood Orange, 2 oz. Item #25982
- Fabric Creations™ Soft Fabric Inks - Marigold, 2 oz. Item #25984
- Fabric Creations™ Soft Fabric Inks - Aqua, 2 oz. Item #25991
- Fabric Creations™ Soft Fabric Inks - African Violet, 2 oz. Item #25995
- Fabric Creations™ Tools - Sponge Cubes Item #26995
- Fabric Creations™ Tools - Foam Printing Mat, 2 pc. Item #26996
- Fabric Creations™ Tools - Cleaning Brush Item #26997
- Fabric Creations™ Block Printing Stamps - Small - Fern Item #27179
- Fabric Creations™ Block Printing Stamps - Border - Feather Item #27196
- Fabric Creations™ Block Printing Stamps - Medium - Baroque Medallion Item #27205
- Fabric Creations™ Block Printing Stamps - Medium - Parade Elephant Item #27206
- Two 18" x 18" squares of white fabric
- 16" Pillow form
- Craft knife
- Pencil
- Craft paper
- Masking tape
- Ruler
- Sewing machine and white thread
- Flat paint brush
- 3" Circle shape

BOHEMIAN STAMPED DIY PILLOW

[Project by Plaid](#)

INSTRUCTIONS

1. Trace a 3" circle shape out of craft paper and cut out with the craft knife.
2. On one 18" white fabric square lightly measure and mark a 16" square.
3. Find the center of the square and position the 3" circle stencil over the center.
4. Paint the circle with Aqua. Let paint dry.
5. Measure 4" from the 16" corner mark on both sides and lightly draw a line so that you now have an inverted triangle.
6. Tape off the triangle and paint in with African Violet. Let paint dry.
7. Measure and mark lightly a 1" border between the African Violet triangles. Tape off border and paint in with Blood Orange. Let paint dry.
8. Place foam mat under fabric in the area that you are to begin stamping and move mat as needed.
9. Begin stamping blocks in colors and placement as shown.
10. Heat set fabric ink according to manufacturer's instructions.
11. Place right sides together and sew a 1" seam allowance on all sides, leaving and opening on one side to insert the pillow form. Trim seam allowance.
12. Insert pillow form and sew opening closed.



PLAID®

40 YEARS OF CREATIVITY

1976-2016



Bring your ideas to life with the Plaid family of brands by signing up for our email newsletter to get project inspiration, tutorials and craft tips!

www.plaidonline.com/subscribe

Bucilla®



MARTHA STEWART CRAFTS®

ISOBEL'S AFGHAN PATTERN

Project by Premier Yarns



MATERIALS

- Downton Abbey Matthew by Premier Yarns (75% Acrylic, 21% Wool; 100 gm/230 yds)
 - #DA4001-03 Birch White (A) – 4 balls
 - #DA4001-04 Stone Blue (B) – 4 balls
 - #DA4001-07 Walnut Brown (C) – 4 balls
- US Size I-9 (5.5 mm) crochet hook or size needed to obtain gauge
- Tapestry needle

ISOBEL'S AFGHAN PATTERN

Project by Premier Yarns

INSTRUCTIONS

Gauge

Block = 9" square. Save time, check your gauge.

Stitch Guide: Adjustable Ring: Leaving a 6-8" tail, hold tail end of yarn in left hand. Make a ring by wrapping yarn around fingers, placing working yarn behind tail. Hold ring just made at the juncture of the two yarns. Insert hook in center of ring, yo, pull up lp. Pull tail of yarn to close ring.

Abbreviations

beg begin(ning)

ch chain

dc double crochet

rep repeat(ing)

rnd(s) round(s)

sp space

Throw

Block

Begin with Adjustable Ring.

Rnd 1: With first color in sequence, ch 3 (counts as dc), 15 dc in ring, join with sl st in 3rd ch of ch 3 – 16 dc.

Rnd 2: Ch 5 (counts as dc, ch 2), *dc in next dc, ch 2; rep from * around, join with sl st in 3rd ch of ch 5 – 16 ch-2 sp. Break yarn.

Rnd 3: With next color in sequence, sl st in 1st ch-2 sp, ch 3 (counts as dc), 2 dc in same sp, *3 dc in next ch-2 sp; rep from * around, join with sl st in 3rd ch of ch 3 – 48 dc.

Rnd 4: Ch 1, sc in same dc as join, *ch 5, sk 2 dc, sc in next dc; rep from * around, ch 5, join with sl st in sc – 16 ch-5 sp.

Rnd 5: Ch 3 (counts as dc), *sc in next ch-5 sp, 6 dc in next ch-5 sp, sc in next ch-5 sp, (6 dc, ch 3, 6 dc) in next ch-5 sp (corner); rep from * twice more, sc in next ch-5 sp, 6 dc in next ch-5 sp, sc in next ch-5 sp, (6 dc, ch 3, 5 dc) in next ch-5 sp, join with sl st in 3rd ch of ch 3. Break yarn.

Rnd 6: Join yarn with sl st in any corner ch-3 sp, ch 6 (counts as dc, ch 3), dc in same sp, *ch 5, dc in next sc, ch 3, sk 3 dc, hdc in next dc, ch 3, dc in next sc, ch 5**, (dc, ch 3, dc) in corner ch-3 sp; rep from * three more times, ending last rep at **, join with sl st in 3rd ch of ch 6.

Rnd 7: Sl st in ch-3 sp, ch 3 (counts as dc) (2 dc, ch3, 3 dc) in same sp, *5 dc in next ch-5 sp, [3 dc in next ch-3 sp] twice, 5 dc in next ch-5 sp**, (3 dc, ch 3, 3 dc) in corner ch-3 sp; rep from * three more times ending last rep at **, join with sl st in 3rd ch of ch 3. Break yarn.

Rnd 8: Join C with sl st in any corner ch-3 sp, ch 3 (counts as dc), 5 dc in same sp, *dc in each dc to corner ch-3 sp, 6 dc in ch-3 sp; rep from * twice more, dc in each dc to end, join with sl st in 3rd ch of ch 3. Break yarn.

ISOBEL'S AFGHAN PATTERN

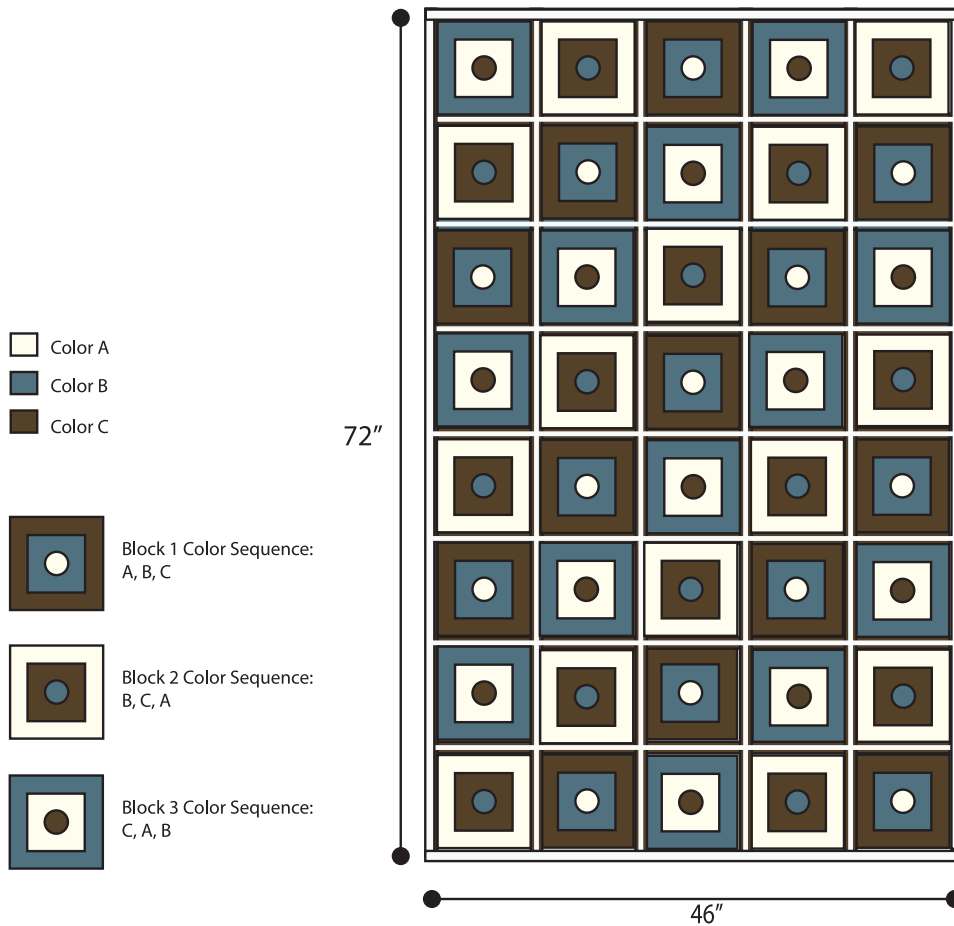
Project by Premier Yarns

INSTRUCTIONS (CONT.)

Rnd 9: Join A with a sl st in any dc, ch 1, sc in same st as join, sc in each dc to end, join with sl st in sc. Using schematic as a guide for color sequence, rep Block until 40 blocks have been worked, working 13 in Block 1 Color Sequence, 14 in Block 2 Color Sequence, and 13 in Block 3 Color Sequence.

Finishing

Arrange squares as shown in schematic and seam using Color A. Work one round of sc evenly around entire Throw, working 3 sc in each corner. Fasten off. Weave in ends. Block lightly.



premier[®]
YARNS

premier®
YARNS



INTRODUCING
DOWNTON ABBEY®
—yarn collection—



Matthew

Lady Mary

Lady Sybil

Branson

4 new yarns in beautiful colors inspired by the popular television show. Ask for Downton Abbey Yarn Collection at your local craft store or find it at www.PremierYarns.com

LOONIE BIRD MARIONETTE

Project by FloraCraft



MATERIALS

- FloraCraft® Make It: Fun® Foam balls: 2.5", 1.5", and (5) 1"
- Small feathers
- Mini craft feather boa
- (60) Pony beads
- (6) 14mm ring beads
- 12mm round bead (nose)
- Round head pin (to match round bead)
- Buttons: (2) 1.5", (2) 1.25", and (4) ¾"
- 5mm wiggle eyes
- Embroidery thread or string
- (2) Chenille stems
- Thin wood dowels: 14" and 8"
- Low-temp glue gun
- Scissors
- Large sewing needle
- Clothespins

LOONIE BIRD MARIONETTE

Project by FloraCraft

INSTRUCTIONS

- 1.** To make the legs, cut two 12" lengths of string. Thread 30 pony beads onto each string. Thread one end of each string through a $\frac{3}{4}$ " button a couple of times to hold the string in place. The button should be touching the bead. Clip a clothespin to the opposite end of the string to hold the beads from slipping off while you work. Cut a 1.5" length of chenille stem. Wrap the loose end of string at the top of the button around the center of the chenille stem and fold the stem in half to pinch the string to secure. The chenille stem should be snug against the button. Twist the ends of the stem together to hold in place.
- 2.** To make the feet, cut two 24" lengths of string. Tie one end of each string through the center of a 1.25" button. This will be the string that controls his foot. Unclip the clothespin from one of the legs. Thread the string through the center of the 1.25" button that you have the 24" length of string tied to, then thread a 1.5" button onto the end of the string for the bottom of the foot. Thread the string through the bottom button a couple of times. Add a drop of glue between the buttons and pull the string snug so the buttons are touching the bottom of the leg. Cut off any extra string and glue the end to the bottom of the button to secure in place. Repeat for the other foot. Glue a $\frac{3}{4}$ " button to the bottom of each foot to help secure the strings in place.
- 3.** Glue the legs to the sides of the 2.5" ball. Add glue to the ends of the chenille stems and insert them into each side of the body. Glue to secure the buttons to the body.
- 4.** Thread an 8" piece of string onto the needle. Thread the needle through a ring bead and then through a 1" foam ball. Continue alternating bead and ball onto the string to create the neck. You should have a ring bead at each end of the neck. Cut two pieces of 1.5" chenille stem and secure each end of the string to the center of a chenille stem. Fold the stems in half and twist the ends to secure. Add glue to the chenille stem at one end of the neck and insert into the front center of the 2.5" body. Add glue to the chenille stem at the other end and glue it into the 1.5" ball for the head.
- 5.** Assemble the handle by making a cross with the two dowels. The 8" piece should cross at about 6" back from one end of the 14" piece. Use a chenille stem to wrap around the dowels where they intersect to secure in place.
- 6.** Cut two 15" lengths of string. Tie one end of each string to the center of a 1.5" piece of chenille stem. Glue one stem into the top of the head and one into the top of the body. Tie the body support string to the handle where the two dowels intersect. Tie the head support string to the 6" end of the other dowel. Tie the leg support strings to each end of the 8" dowel.
- 7.** Glue a small piece of feather boa to the back of the bird. Glue a tiny piece of boa to the top of the head. Glue an additional small feather to the top of the head.
- 8.** Thread the small round bead onto the round head pin and glue to the face for the beak. Glue the two wiggle eyes just above the beak.



SHOW STOPPER

Who can resist the whimsical charm of a hand-crafted favorite? Rediscover the magic of creating quick and easy projects with FloraCraft® Make It: Fun® Foam in a variety of shapes and sizes.

From timeless classics to the great idea that just popped into your head, FloraCraft provides the building blocks for your imagination.

For full instructions on this show stopping project, visit makeitfuncrafts.com.

FLORACRAFT

ONE W. LONGFELLOW PLACE | LUDINGTON, MI 49431 | www.floracraft.com



Stay connected using [#makeitfuncrafts](https://twitter.com/makeitfuncrafts)



MAKE THIS PROJECT

using FloraCraft® Foam, available at your favorite craft retailer.

HERRINGBONE DIY PAINTED RUG

Project by Testors



MATERIALS

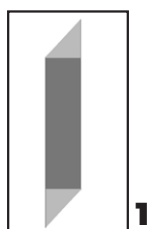
- Testors Aztek Large Coverage Nozzle, Yellow - #9344X
- Testors Aztek Airbrush
- Testor's Aztek Paint Cups
- Testors Aztek Airbrushable Acrylic Paint - 9487 Sky Blue
- Rug 17.75" x 31.75"
- ½" Masking tape
- Card stock
- Tape
- Chalk
- Ruler

HERRINGBONE DIY PAINTED RUG

INSTRUCTIONS

Project by Testors

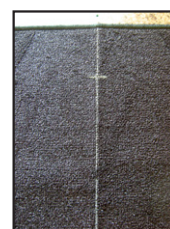
1. Cut two rectangles from card stock to measure 13" x 2" and 10" x 2". Bring the left top corner flush with the long right side and the right bottom corner flush with the long left side on each piece. Crease the card stock on the folds and cut away the corners to create top and bottom 45-degree angles. Cut three of each size.
2. Create a template by taping the pieces together with the angle of a short piece against the side of a long piece. Continue to alternate short and long pieces until all six are connected.
3. With chalk, mark the vertical center of the rug. Also make a mark 4" down from the top center.
4. Place the template with the center point at the 4" mark. Trace the top edge of the template with chalk.
5. Cover the chalk line with half-inch masking tape.
6. Move the template down leaving 2" between the side template edge and the edge of the masking tape. Trace the template edge with chalk. Continue moving the template in the same way and tracing it.
7. Wherever tape ends meet at a point (A), close that opening with an additional piece of tape (B) reaching the next intersecting tape line.
8. When you're done, all the openings will be closed and the herringbone pattern will emerge.
9. Airbrush the entire rug using Testors yellow, large-coverage nozzle, attached to the airbrush. This nozzle is designed to cover larger areas with ease. After painting, wait a couple of hours to remove the masking tape.
10. Use a wet toothbrush to remove chalk lines.



1



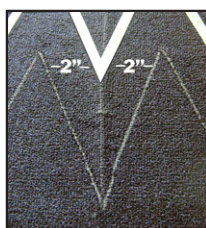
2



3



4



6



7A



7B



8



9



www.testors.com

© 2015 The Testor Corporation



Turn Imagination Into Keepsake Creation

Testors® is the best choice in paints to finish a craft project exactly as imagined. Testors® paints are available in enamels, acrylics and lacquers, along with tools and adhesives to bring iconic Testors® colors or textures to almost any surface.

Available nationwide at select craft stores, art supply retailers and online merchants.

MAKE LIFE A HOBBY™



DIY ADJUSTABLE BANGLE BRACELET

Project by Beadalon



MATERIALS

- Artistic Wire, 16 or 18 gauge
- 3D Bracelet Jig
- Bent Chain Nose Pliers
- Cutter

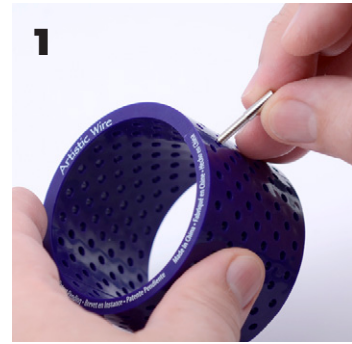
Beadalon®

DIY ADJUSTABLE BANGLE BRACELET

Project by Beadalon

INSTRUCTIONS

1. Insert one pin into one of the holes on the edge of the 3D Bracelet Jig.
2. Push the peg all the way into the Jig.
3. Carefully push one of the holder tubes onto the portion of the pin on the inside of the Jig.
4. Wrap the 16Ga Artistic Wire with the curve of the wire matching that of the 3D bracelet Jig.
5. Wrap the end of the wire around the peg using as little wire as possible to make the loop, make sure the wire is wrapped as shown.
6. Insert a second peg one row of holes to the right of the first pin and pound toward you. 3 holes for a small bracelet, 4 for medium, 5 for large and more for larger wrists. Make sure to attach the plastic holder on the inside.
7. Pull the wire all the way around the circumference of the 3D Bracelet jig and rest it next to the last peg inserted.
8. Pull the wire with your dominant hand and twist the jig clockwise with your other hand to form the loop. Forming loops on jigZs is much easier when you use your index finger to guide the wire around the loop for a tight wrap. Make the jig do the wrapping instead of attempting to wrap with your hand around the small pegs.
9. Use the Flush Cutter to cut 1/4 of the loop off, make certain that the flush part of the cutter is facing the part of the loop that will stay on the bracelet. This drawing is a correctly cut 3/4 loop. Only cut 1/4 of the loop. Repeat this cut on the opposite side.
10. Remove the pin holding one of the ends of the bracelet. The Bracelet should spring off of the 3D Bangle Bracelet Jig. Attach one of the open rings to the Proper size Bending Accessory and pull the wire around the circumference. 1 5/8" diameter is for Hard Wires. 2" diameter is for Soft Wires.
11. Use the 18-16Ga Wire Rounder tip in the Battery Operated Reamer to smooth the end of the cut wire. Make sure not to scratch the wire with the collet of the reamer when rounding the wire.

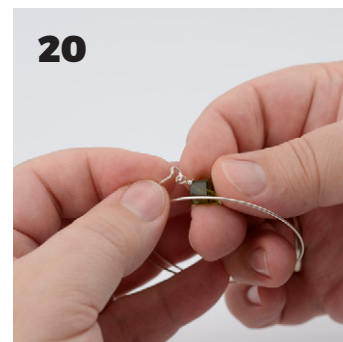
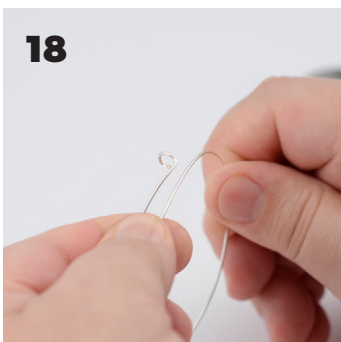
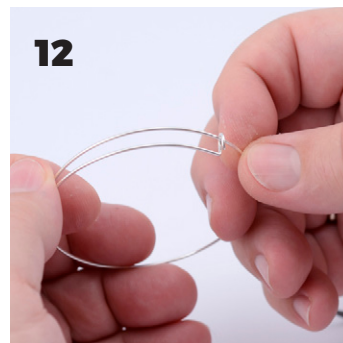
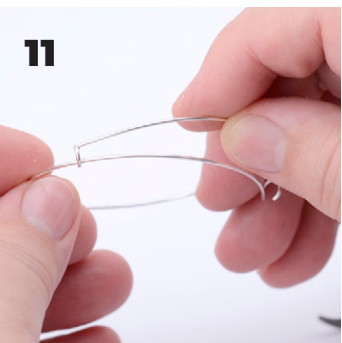
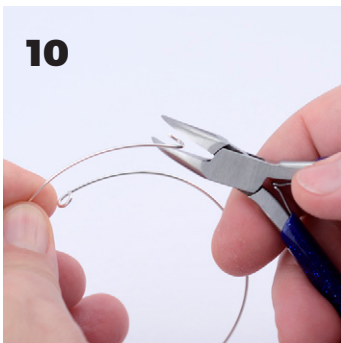
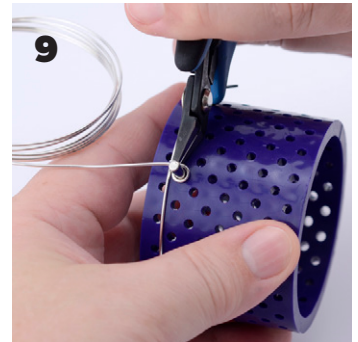


DIY ADJUSTABLE BANGLE BRACELET

INSTRUCTIONS (CONT.)

[Project by Beadalon](#)

12. Grasp one of the loops with the bent portion of the Bent Chain Nose Pliers.
13. Bend the loop up as shown.
14. Grasp the right angle bend as shown.
15. Twist the opening away from you about 1/4 turn. Do the same for the other side of the loop.
16. A correctly bent end. Be carefull not to change the angle of the wire. Repeat steps 12-16 on the other loop.
17. Slip one of the loops onto the wire as shown.
18. Carefully close the loop

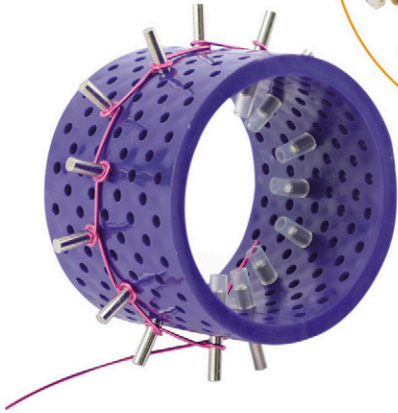


New and Exclusive Products from Beadalon & Artistic Wire

AWARD WINNING!

3D Bracelet Jig™ PATENT PENDING

Create trendy bangle bracelets, cuff bracelets, and curved components.



Bracelet Bangle Weaving Tool

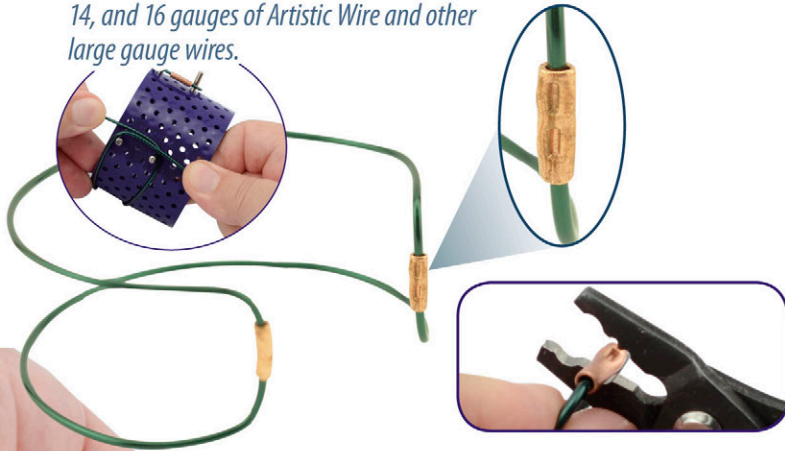
by Kleshna

Weave intricate bracelets with ease using Cord, Supplemax, or Beadalon Bead Stringing Wires.



Large Wire Crimp Connectors

The perfect cold connection to join together 12, 14, and 16 gauges of Artistic Wire and other large gauge wires.



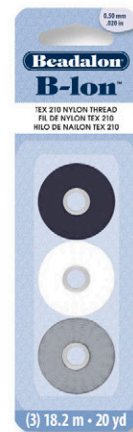
The Really Big Jig™

Use this mega-jig to create large designs on the 11.25 in x 11.25 in (28.57 cm x 28.57 cm) work area.



Findings Forms™ PATENT PENDING

Use these clever fixed peg jigs to make your own wire clasps, ear wires, connectors, and shapes.



B-Lon™

B-Lon is a Tex210 nylon thread specially formulated for a variety of beading and jewelry making applications.



Beadalon®

Artistic Wire®

To find an Artistic Wire/Beadalon retailer near you, please visit www.beadalon.com/store_locator.asp



KNOOK INFINITY SCARF PATTERN

Project by Leisure Arts



**LEISURE
ARTS**
the art of everyday living
www.leisurearts.com

MATERIALS

- Medium Weight Yarn [4 ounces, 200 yards
- (113 grams, 183 meters) per skein]: 2 skeins
- Knoon, size I (5.5 mm)
- Yarn needle (optional)

KNOOK INFINITY SCARF PATTERN

INSTRUCTIONS

Project by Leisure Arts

Knook Basics

Learn how to use the knook. Click to play videos.

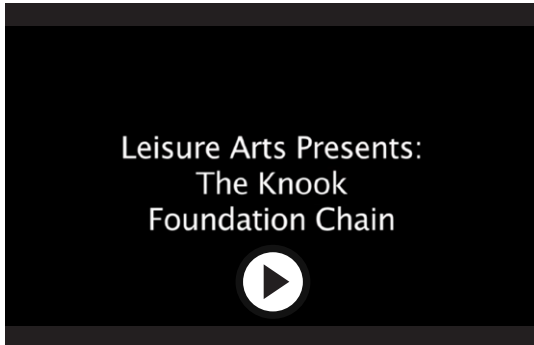
How to Thread



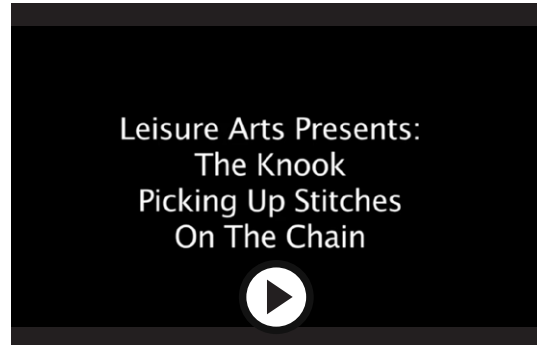
Slip Knot



Foundation Chain



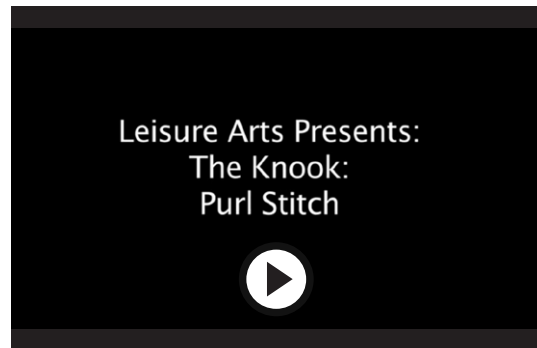
Picking Up Stitches



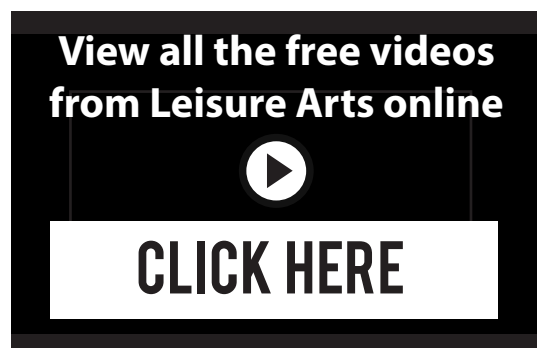
Knit Stitch



Purl Stitch



Binding Off



KNOOK INFINITY SCARF PATTERN

INSTRUCTIONS (CONT.)

[Project by Leisure Arts](#)

Infinity Scarf

For a möbius or cowl, just complete the optional finishing. Wrap 2 or 3 times to wear.

Finished Size: 8" x 72" (20.5 x 183 cm)

Gauge: In Garter Stitch, 13 sts = 4" (10 cm) (see Gauge, page 43)

Scarf

Ch 26.

Pick up 25 sts on foundation ch (see Picking Up Stitches video, page 41): 26 sts.

Row 1: Knit across.

Repeat Row 1 for pattern until Scarf measures approximately 72" (183 cm) from foundation ch edge or to desired length.

Bind off all sts loosely in knit (see Binding Off video, page 41).

Cowl

Finishing (optional)

Thread yarn needle with a 16" (40.5 cm) length of yarn. Fold Scarf in half lengthwise, and sew foundation ch edge to the bind off edge.

Copyright © 2016 by Leisure Arts, Inc., 104 Champs Blvd., STE 100, Maumelle, AR 72113-6738. All rights reserved. This publication is protected under federal copyright laws. Reproduction or distribution of this publication or any other Leisure Arts publication, including publications which are out of print, is prohibited unless specifically authorized. This includes, but is not limited to, any form of reproduction or distribution on or through the Internet, including posting, scanning, or e-mail transmission.



KNOOK INFINITY SCARF PATTERN

Project by Leisure Arts

INSTRUCTIONS (CONT.)

Abbreviations

ch(s) chain(s)

cm centimeters

K knit

mm millimeters

P purl

st(s) stitch(es)

Symbols And Terms

() or [] – work enclosed instructions as many times as specified by the number immediately following or contains explanatory remarks.

colon (:) – the number(s) given after a colon at the end of a row or round denote(s) the number of stitches you should have on that row or round.

front vs. back side – As you are working, the side facing you is the front of your work; the back is the side away from you.

right vs. wrong side – On the finished piece, the right side of your work is the side that the public will see.

Gauge

Gauge is a measurement of the number of stitches and rows in a 4" (10 cm) square piece in the pattern you're working. Finding the exact gauge is not important for the pattern included in this book. Exact gauge is essential for proper size when making a fitted garment. Each of the three Knooks included in this kit will produce a different gauge when used with the same yarn. The smallest Knook produces a tighter gauge and the larger Knooks produce a looser gauge.

Weaving in Ends

Once you've completed your project, you'll notice loose yarn ends where you started, ended or joined a new skein of yarn. To hide these yarn ends, thread a yarn needle with one end. With the wrong side facing you, weave the needle through several stitches, then reverse the direction and weave it back through several more stitches. When the end is secure, clip the yarn close to your work.

Yarn Information

The project shown was made using medium weight yarn. Any brand of medium weight yarn may be used. It is best to refer to the yardage/meters when determining how many skeins to purchase. We have made every effort to ensure that these instructions are accurate and complete. We cannot, however, be responsible for human error, typographical mistakes, or variations in individual work.

Discover **the Knook**[®]

the fearless way to learn to knit!



Now anyone can knit —
with **the Knook**[®],
a specialized crochet hook
from Leisure Arts
that replaces traditional
knitting needles.
There's no more need
to worry about dropped
stitches; a cord threaded
through **the Knook**[®] handle
keeps them secure!



*The Knook Beginner Set has
everything you need to get started!*

**LEISURE
ARTS**[®]
the art of everyday living
www.leisurearts.com

Visit LeisureArts.com/the-knook.html for free how-to videos and patterns (including the coaster shown above). Leisure Arts is the leader in how-to publications and creative products that help people enjoy the art of everyday living. Follow us online to find an endless supply of inspiring crafts, crochet, knitting, quilting & more!

EASY WATERCOLOR DIE CUT CARD

Project by Create and Craft



MATERIALS

- Tattered Lace Baby Blue Machine
- White Cardstock Paper 4.25" x 5.5"
- White Watercolor Paper 4.25" x 11"
- Tattered Lace Congratulations Die
- Sakura Koi Watercolor Pocket Field Sketch Box
- 3L Scrapbook Adhesives 3D Foam Squares
- Black Cardstock
- Liquid Adhesive

EASY WATERCOLOR DIE CUT CARD

Project by Create and Craft

INSTRUCTIONS

1. Score and fold the watercolor paper at 5.5”.
2. Fill your water brush from the Sakura Koi Watercolor Pocket Field Sketch Box with water.
3. Using limited water, create a rainbow of color on the front of the card. Allowing about a 1/2” of each color.
4. Place your Tattered Lace Congratulations Die on the white cardstock about a 1/2” from the top. Run it through your Tattered Lace Baby Blue Machine. Remove the die and place 1/2” lower and cut again. Repeat this process, cutting this die six times.
5. After your watercolor paper has dried, attached 3L Scrapbook Adhesives 3D Foam Squares to the back of the white cardstock. Make sure you place the squares between the words as well.
6. Adhere the cardstock piece to the front of the card.
7. Place the Tattered Lace Congratulations Die on a small piece of black cardstock and cut using the Tattered Lace Baby Blue Machine.
8. Adhere the black congratulations to the bottom of the front of the card using liquid adhesive.





We're crafting with you.

24/7 on air, online and on mobile.

Create and Craft is an American company with heritage. Originating in the United Kingdom, Create and Craft USA launched just under a year ago to huge success. Now, Create and Craft USA is the one, and only, 24/7 crafting companion for the US market.

Create and Craft is looking for project creators, digital influencers, social media stars and blogging wonders! This program is designed to pair passionate crafters with our social media and blogging community through inspirational projects.

Interested? Contact social@createandcraft.com

 CreateAndCraft.com  Facebook.com/CreateCraftUSA  Twitter.com/CreateCraftUSA  Pinterest.com/CreateCraftUSA



**Your
project
here!**



CONSTELLATION POSTCARDS

Project by Sakura of America



MATERIALS

- Koi® Tube Watercolors
- Gelly Roll® Classic™ white pen
- Watercolor paper (Strathmore)
- Paintbrush
- Palette
- Water
- Pencil
- Ruler
- Scissors
- Paper towel or rag

CONSTELLATION POSTCARDS

Project by Sakura of America

INSTRUCTIONS

Created for Sakura of America by Made By Marzipan.

1. Mark the dimensions of the four postcards you're painting. You can trace a 4x6 postcard or use a ruler instead.
2. Use Vermilion Hue, Lemon Yellow, Deep Green, Prussian Blue, Cerulean Blue and Ultramarine watercolors. Add a small dab of each color to separate compartments on your palette. These Koi® paints are intense, so a little goes a long way. Add about two teaspoons of water to each, then blend.
3. Paint all of the postcards at the same time. Start with Vermilion Hue and add a single splash of color somewhere near the center of each postcard.
4. Now add a couple spots of Deep Green to each postcard.
5. Next add Cerulean Blue. It's okay to touch the other colors and allow them to blend a bit.
6. Now add the Lemon Yellow.
7. Use a generous amount of Ultramarine to the cards. Wait until the cards are dry before adding the Prussian Blue.
8. Wet your brush and use it to blend the remaining white areas on the card. Allow the paper to dry completely.
9. Now add the last color, which is a deep Prussian Blue. It's also handy to have a paper towel or cloth rag for blotting. Add a generous amount of paint around the edges of the card, then blot and blend the paint using a paper towel or rag. This adds some texture and the appearance of depth.
10. Allow the paper to dry, then cut out along the pencil lines.
11. If you want, you can brush a quick watercolor border on the back of the card as well.

Creating Constellations

1. Now draw out constellations with the white Gelly Roll® pen. It's helpful to sketch out some designs on a piece of colored scratch paper first. You can make any shape or design you'd like. Just remember to make all of your lines straight, and your angles pointed rather than curved. You could look up and copy actual constellations, or you could make your own interpretation of astrological symbols. Or you could draw an animal that inspires you or maybe the initials of the person you're sending the postcard to.
2. Once you've drawn the outline, add circles at each intersection to create stars. You can add extra points and lines within the shape as well.
3. Finally, add circles and speckles to the background to give the impression of stars.
4. Prep your postcard for mailing by drawing a line on the back, about 1/3 of the way from the right edge. Draw three lines for the address.

Unparalleled ARCHIVAL INK.

Supplement **Pigma Micron®** with the new, expressive **Pigma® Professional Brush**.

Available in three sizes



WHAT'S ON your DESK?

Share on Instagram how Sakura pens fit into your studio space, just like artist [@lisacongdon](#).

#mysakurastudio
www.sakuraofamerica.com





13

DIY HOME DECOR IDEAS, PAPER CRAFTS, AND MORE

